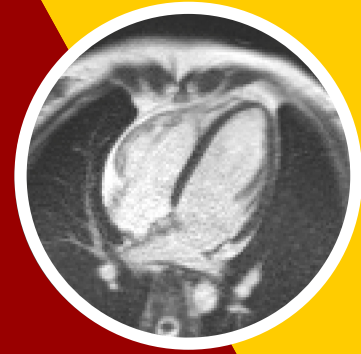


Seeking adult volunteers  
with **ATRIAL FIBRILLATION** or  
other **ABNORMAL HEART RHYTHMS**  
to participate in a research study.



Investigators are evaluating a low-field magnetic resonance imaging (MRI) scanner to develop imaging technology to better understand human health and disease especially in body parts that move - like the heart. The aim is to obtain improved quality images of the heart in shorter scan times.

## Needed: Participants for **CARDIAC MRI**

Participation includes 1 MRI scan lasting approximately 1 hour at the Dynamic Imaging Science Center in the Michelson Building on the USC University Park Campus.



### CONTACT

**Mary Yung**

Research Coordinator

maryyung@usc.edu

213-764-4991

### MORE INFO

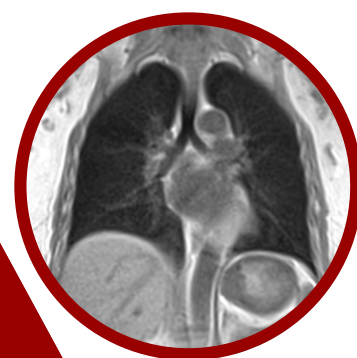


Please note that the 0.55T MRI scanner is investigational (NOT diagnostic) and your participation in this study is completely voluntary. As a volunteer you may change your mind to participate at any time. If you are interested in being a volunteer, we will provide you with more information regarding the study and your participation. Please contact us with any questions you may have.

Seeking adult volunteers with  
**STABLE LUNG CONDITIONS**  
to participate in a research study.

COPD, emphysema, asthma, chronic bronchitis,  
valley fever, TB, lung surgery, sarcoidosis,  
prior pneumonia, benign lung tumors,  
long COVID, non-specific  
interstitial lung disease  
(or scarring from  
occupational  
exposures)

# Needed: Participants for **LUNG MRI**



Investigators are evaluating a low-field magnetic resonance imaging (MRI) scanner to develop imaging technology to better understand human health and disease especially in body parts that move - like the lungs. The aim is to obtain improved quality images of the lungs in shorter scan times.



Participation includes 1 MRI scan lasting approximately 1 hour at the Dynamic Imaging Science Center in the Michelson Building on the USC University Park Campus.

## CONTACT

**Mary Yung**

Research Coordinator  
maryyung@usc.edu  
213-764-4991



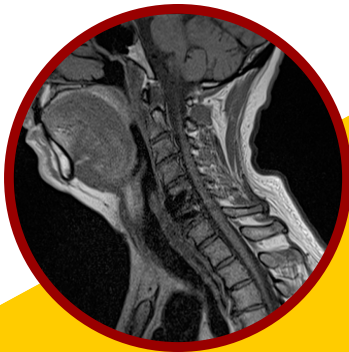
**MORE INFO**

Please note that the 0.55T MRI scanner is investigational (NOT diagnostic) and your participation in this study is completely voluntary. As a volunteer you may change your mind to participate at any time. If you are interested in being a volunteer, we will provide you with more information regarding the study and your participation, including. Please contact us with any questions you may have.

Seeking adult volunteers  
with **ORTHOPEDIC METALLIC IMPLANTS**  
or **COILED/CLIPPED BRAIN ANEURYSMS**  
to participate in a research study.



**MORE INFO**



Investigators are evaluating a low-field MRI scanner to develop imaging technology to better understand human health especially in parts of the body where air or metal disrupt the magnetic field. The aim is to obtain improved quality images of these parts of the body in shorter scan times.

Participation includes 1 MRI scan lasting approximately 1 hour at the Dynamic Imaging Science Center in the Michelson Building on the USC University Park Campus.



**CONTACT**

**Mary Yung**  
Research Coordinator  
maryyung@usc.edu  
213-764-4991

**Needed:**  
**Participants for**  
**MRI OF IMPLANTS**

Please note that the 0.55T MRI scanner is investigational (NOT diagnostic) and your participation in this study is completely voluntary. As a volunteer you may change your mind to participate at any time. If you are interested in being a volunteer, we will provide you with more information regarding the study and your participation. Please contact us with any questions you may have.

Seeking adult volunteers with  
**STABLE LIVER CONDITIONS**  
to participate in a research study.



- fatty liver
- liver iron overload
- cirrhosis
- hepatitis

**CONTACT**

**Mary Yung**

Research Coordinator

[maryyung@usc.edu](mailto:maryyung@usc.edu)

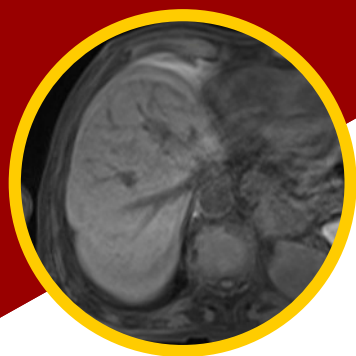
213-764-4991



**MORE INFO**

Investigators are evaluating a low-field magnetic resonance imaging (MRI) scanner to develop imaging technology to better understand human health and disease especially in body parts that move - like the liver. The aim is to obtain improved quality images of the liver in shorter scan times or with scans robust to motion.

Participation includes 1 MRI scan lasting approximately 1 hour at the Dynamic Imaging Science Center in the Michelson Building on the USC University Park Campus.



**Needed:**  
**Participants for**  
**LIVER MRI**

Please note that the 0.55T MRI scanner is investigational (NOT diagnostic) and your participation in this study is completely voluntary. As a volunteer you may change your mind to participate at any time. If you are interested in being a volunteer, we will provide you with more information regarding the study and your participation, including compensation. Please contact us with any questions you may have.