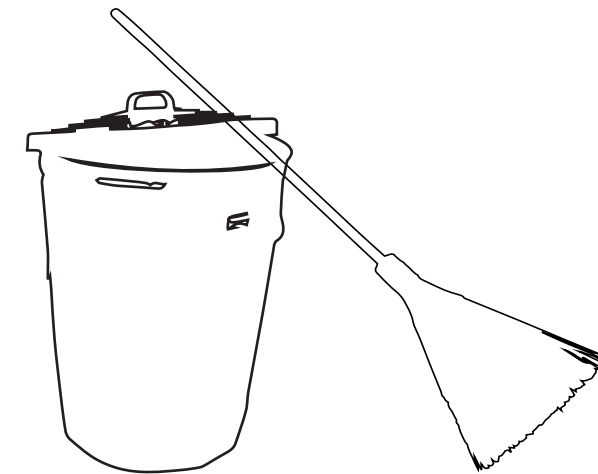


COMMUNITY MAINTENANCE AT ECHO PARK LAKE

A new maintenance proposal for Echo Park Lake
To be carried out by neighborhood volunteers and the currently unhoused community
Designed to replace routine “maintenance sweeps” that dismiss and deligitimize the unhoused



BY DANIELLE VONLEHE
ARCH 698A, DESIGN RESEARCH
NOVEMBER 15. 2020

01 CURRENT MAINTENANCE AGENCIES

LA REC & PARK

“Our mission is to enrich the lives of the residents of Los Angeles by providing safe, welcoming parks and recreation facilities and affordable, diverse recreation and human services activities for people of all ages to play, learn, contemplate, build community and be good **stewards of our environment.**

Our vision is to provide affordable recreational, physical and cultural opportunities for all of Los Angeles residents, with a focus on families, youth development and building healthy communities. The programs and services offered by the Department will provide excellent value and quality and emphasize the **equitable distribution of resources** throughout the City. We will offer these

DUTIES INCLUDE:

- + RECREATIONAL, SOCIAL AND CULTURAL PROGRAMMING
- + MAINTENANCE OF ATHLETIC FIELDS AND COURTS, SENIOR CENTERS, AQUATIC CENTERS, MUSEUMS, DOG PARKS
- + MAINTENANCE OF URBAN TREE CANOPY AND HIKING TRAILS
- + LAND ACQUISITION

*LA SANITATION

“The primary responsibility of LA Sanitation (LASAN) is to **collect, clean and recycle solid and liquid waste** generated by residential, commercial and industrial users in the City of Los Angeles and surrounding communities.

Serving over four million residents with approximately 2,800 dedicated professional, technical, administrative, craft, clerical and service personnel, LASAN **protects the public health and environment** and enhances the quality of life in the City of Los Angeles' neighborhoods.

Through these essential public service programs, LA Sanitation delivers a triple bottom line of economic, environmental, and social benefits that sustain the quality of life in Los Angeles.”

DUTIES INCLUDE:

- + COLLECTION AND REMOVAL OF SOLID WASTE (TRASH, RECYCLABLES, COMPOST, BULKY ITEMS)
- + MULCH SERVICES
- + WASTEWATER COLLECTION AND TREATMENT INCLUDING SEWER LINES, PUMPING PLANTS, AND RECLAMATION SITES
- + WATERSHED PROTECTION BY COMPLIANCE MONITORING OF LOW IMPACT DEVELOPMENT, GREEN INFRASTRUCTURE PROJECTS, AND ENVIRONMENTAL COMPLIANCE FOR NEW BUILDING

*STREET SERVICES

“The Street Renewal Division’s (formerly known as the Resurfacing and Reconstruction Division) mission is to **maintain all improved streets, alleys, and related thoroughways** in perpetually good to excellent condition while providing desirable standards of safety, appearance, and convenience for residents and the traveling public within our jurisdiction. We have a street network comprised of 28,000 lane miles of streets, and 800 miles of alleys. The City of Los Angeles has the largest municipal street system in the nation.

The Street Maintenance Division provides some of the most basic, yet essential services the Bureau has to offer. The Division is committed to the **cleaning and maintenance** of 6,500 centerline miles of dedicated public thoroughfares [28,000 lane miles] and 800 centerline miles of alleys in an area exceeding 466 square miles.

DUTIES INCLUDE:

- + MAINTENANCE OF PAVEMENT INCLUDING STREETS AND ALLEYS
- + MANAGEMENT OF STREET TREES ALONG PUBLIC THOROUGHFARES
- + STREETScape IMPROVEMENTS SUCH AS CURBS, BIKE FACILITIES, LANDSCAPING, BUS LANDING FACILITIES
- + STREET SWEEPING
- + SIDEWALK REPAIRS AND INSTALLATION OF ADA COMPLIANT ACCESS RAMPS
- + POT HOLE REPAIRS
- + WEED ABATEMENT INSPECTION ON PRIVATE PROPERTIES

PROPOSED AND DISBANDED:

CARE: CLEANING AND RAPID ENGAGEMENT (LASAN + LAHSA) OCTOBER 2020- DECEMBER 2020

“LASAN is creating neighborhood-based comprehensive cleaning and rapid engagement (CARE) teams that will use data-driven tools to provide public health services to encampments, identify areas of highest need, and ensure that the hardest-hit areas receive regularly scheduled cleanups and hygiene services. Each CARE team will be assigned to a specific location, enabling the City to deploy clean up services more efficiently, and help sanitation workers build stronger relationships with homeless Angelenos in desperate need. The teams will receive specialized mental health training and deliver public health resources — including **daily trash collection and mobile restrooms** — to homeless communities. Launch of the CARE teams coincides with the creation of LASAN's new Livability Services Division which focuses on eliminating illegal dumping, providing waste solutions for the City's unsheltered population, and making great strides in LA's livability index.”

RE-EVALUATING DUTIES:

CITY

- + MAINTENANCE OF ATHLETIC FIELDS AND COURTS
- + MAINTENANCE OF URBAN TREE CANOPY
- + COLLECTION AND REMOVAL OF SOLID WASTE - TRASH AND RESTROOMS
- + MANAGEMENT OF STREET TREES
- + SIDEWALK/POTHOLE REPAIRS
- + MAINTENANCE OF STREET FACILITIES (CURBS, BIKES, ETC)

COMMUNITY

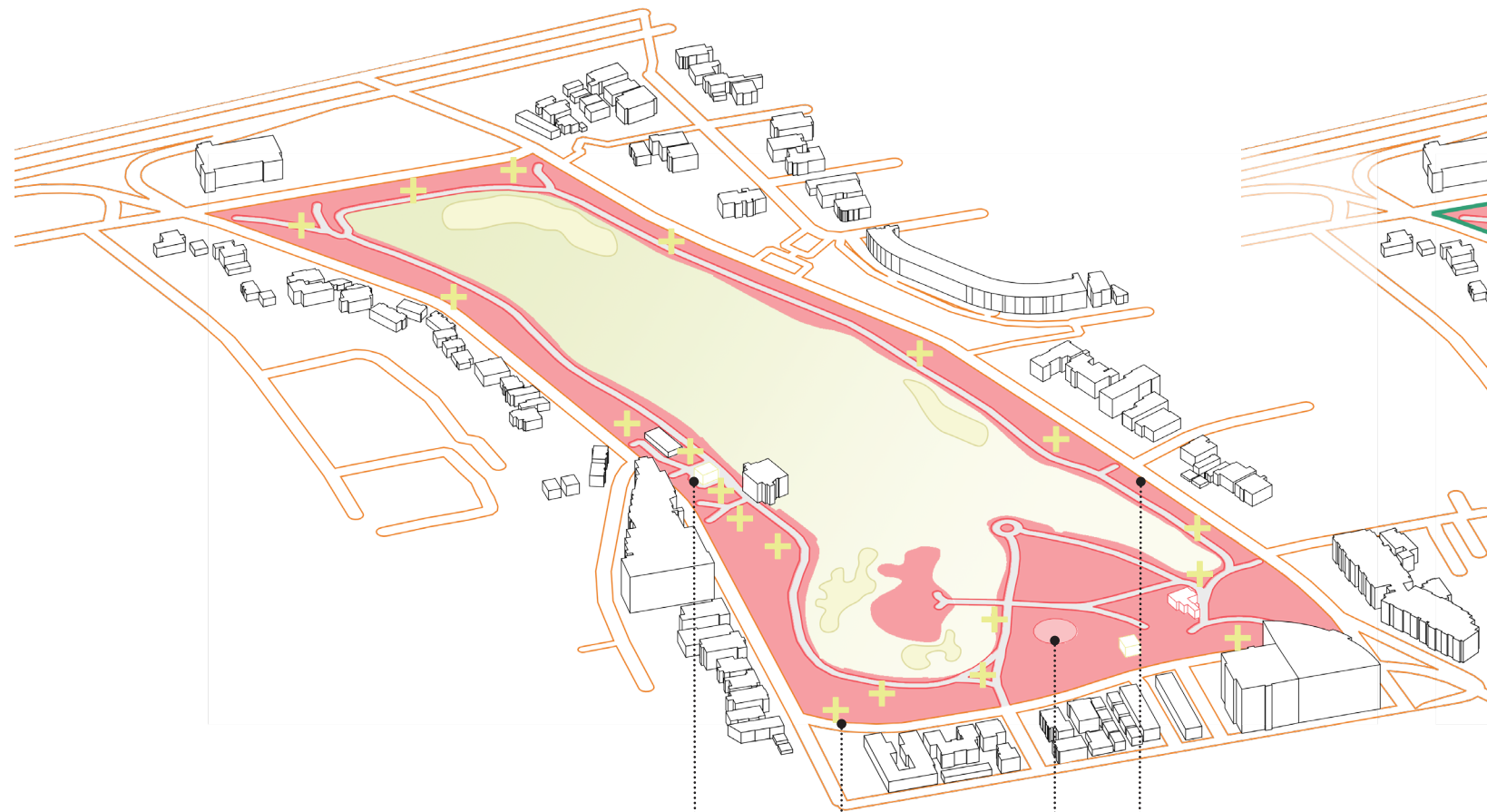
- + STREET SWEEPING
- + COLLECTION AND REMOVAL OF SOLID WASTE - RECYCLING AND COMPOST
- + PLANT MANAGEMENT

02 MAINTENANCE SPACES

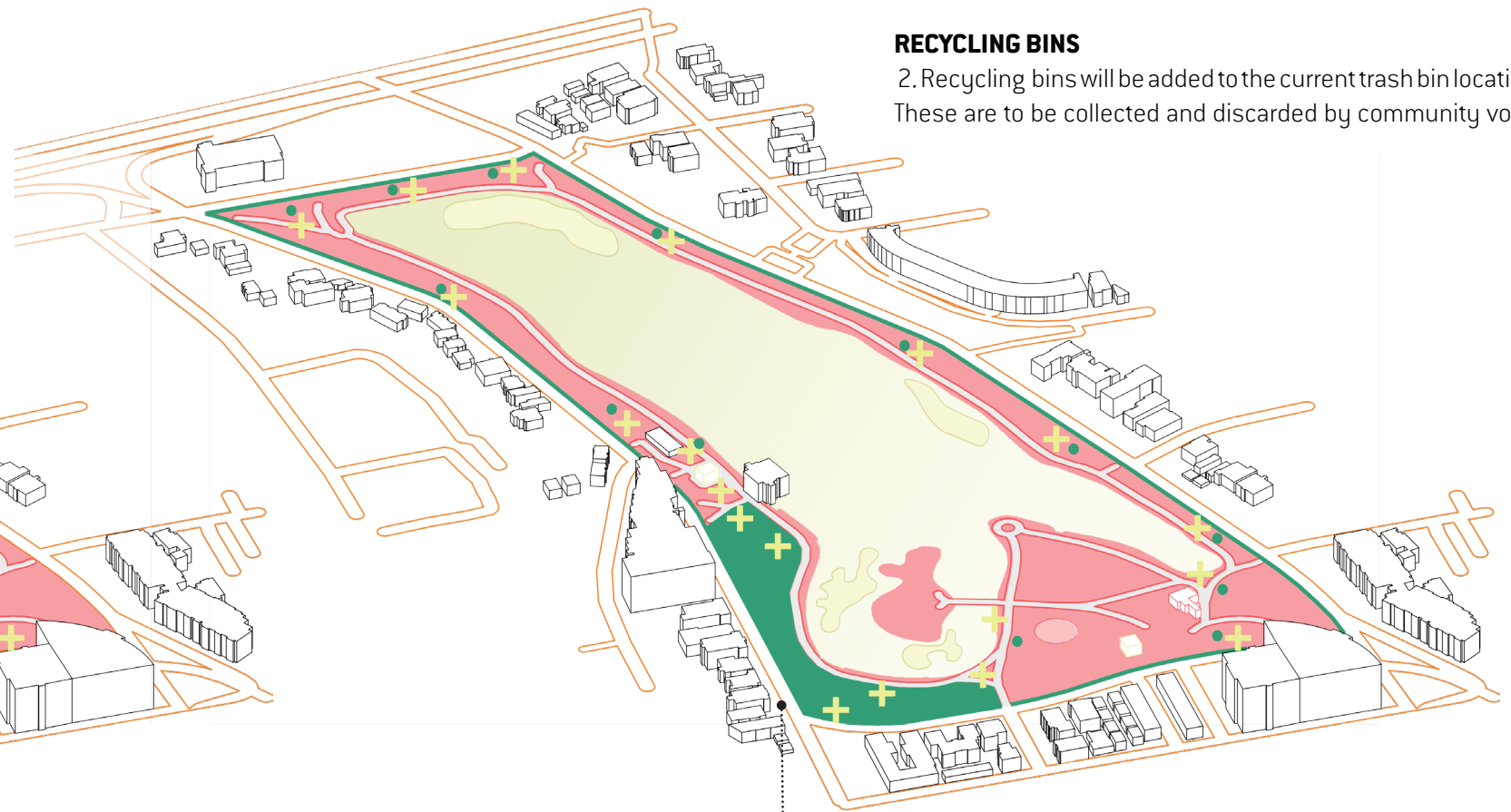
- REC AND PARK
- STREET SERVICES
- SANITATION
- COMMUNITY
- TRASH
- RECYCLING

LA CITY sweeps and routine maintenance cleaning are responsible for displacing the unhoused, the loss of personal items, and a general feeling of insecurity among vulnerable members of the population. The perimeter green spaces at Echo Park Lake are maintained and managed by LA Dep of Rec and Park, the agency responsible for calling in and collaborating to carry out encampment cleanups in the immediate lake vicinity. Proximate sidewalks are maintained and managed by Street Services. During the event of a sweep, Street Services workers and LAHSA are supposed to be on hand to “provide outreach to the campers” and “ensure safe passage on the sidewalk in the neighborhood surrounding the park.” (<https://losangeles.cbslocal.com/2020/02/12/city-crews-another-echo-park-lake-cleanup-following-protests-from-homeless-campers/>). LA Sanitation currently manages 2 public restrooms within the park as well as monitorization and maintenance of the trash bins scattered around the park. There is not a notable presence of recycling bins at the Lake.

CURRENT:



PROPOSED:



SIDEWALK TAKEOVER

1. The proximate sidewalk around Echo Park Lake will be managed by community maintenance program volunteers rather than by Street Services. This change will create safer sidewalk spaces for the unhoused.

RECYCLING BINS

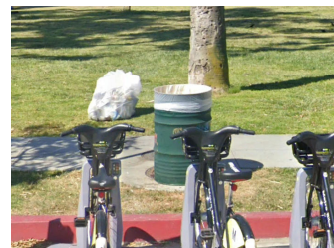
2. Recycling bins will be added to the current trash bin location areas. These are to be collected and discarded by community volunteers.

MAINTENANCE HUB

3. A new maintenance hub will be dedicated in the Northeast area of the park. This area will be used for tool storage, large bin recycling drop-off, the storage of personal sanitation items which will be free of charge, cell phone charging stations, and the site of a small community orchard to serve as a social gathering space.



LA SAN currently maintains (1/22) restrooms near high traffic zones



LA SAN is responsible for trash collection around the lake

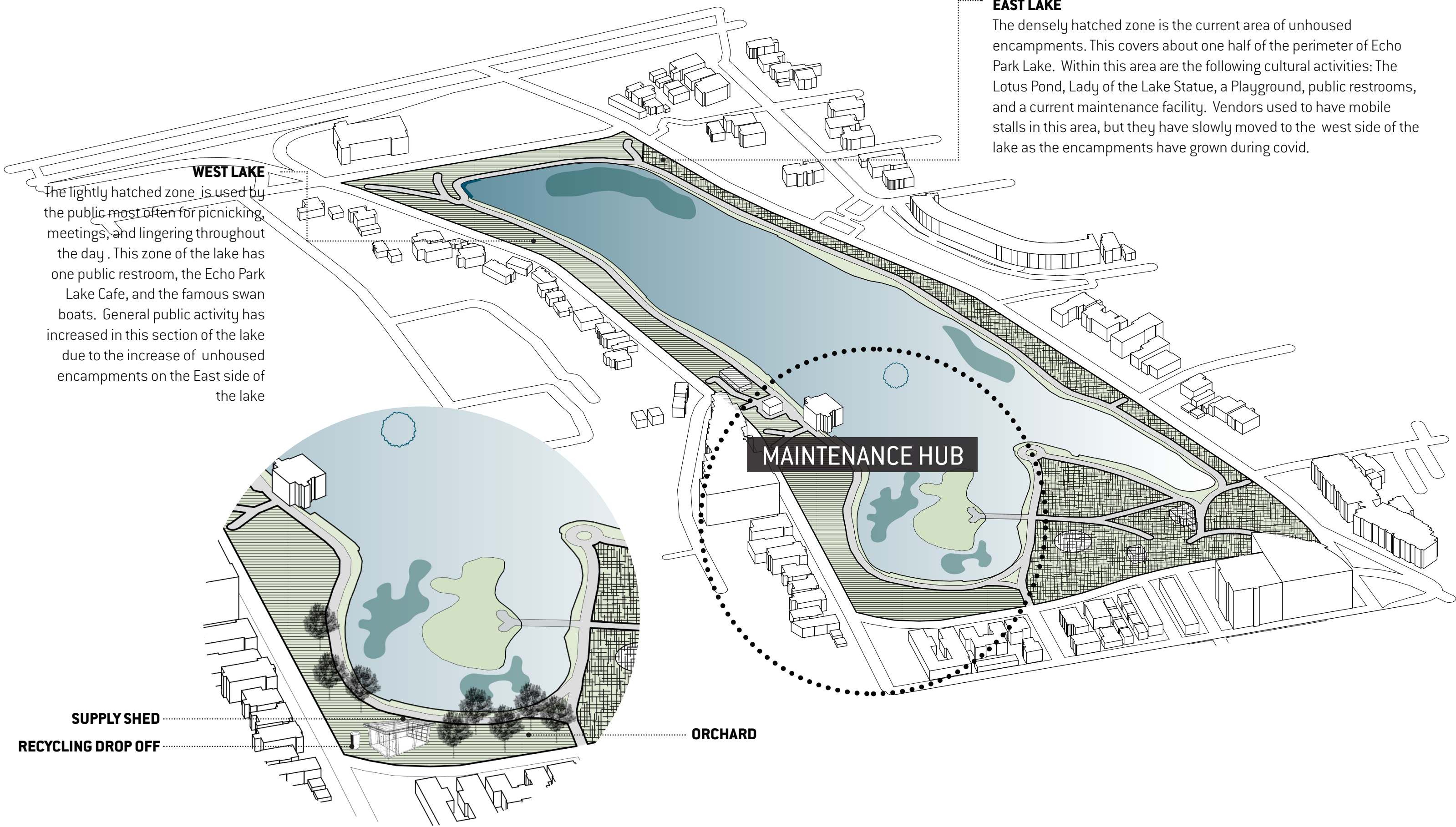


REC AND PARK maintains play area



LA SAN managed restroom (2/2)

03 MAINTENANCE HUB: siting



EAST LAKE

The densely hatched zone is the current area of unhoused encampments. This covers about one half of the perimeter of Echo Park Lake. Within this area are the following cultural activities: The Lotus Pond, Lady of the Lake Statue, a Playground, public restrooms, and a current maintenance facility. Vendors used to have mobile stalls in this area, but they have slowly moved to the west side of the lake as the encampments have grown during covid.

WEST LAKE

The lightly hatched zone is used by the public most often for picnicking, meetings, and lingering throughout the day. This zone of the lake has one public restroom, the Echo Park Lake Cafe, and the famous swan boats. General public activity has increased in this section of the lake due to the increase of unhoused encampments on the East side of the lake

MAINTENANCE HUB

SUPPLY SHED

RECYCLING DROP OFF

ORCHARD

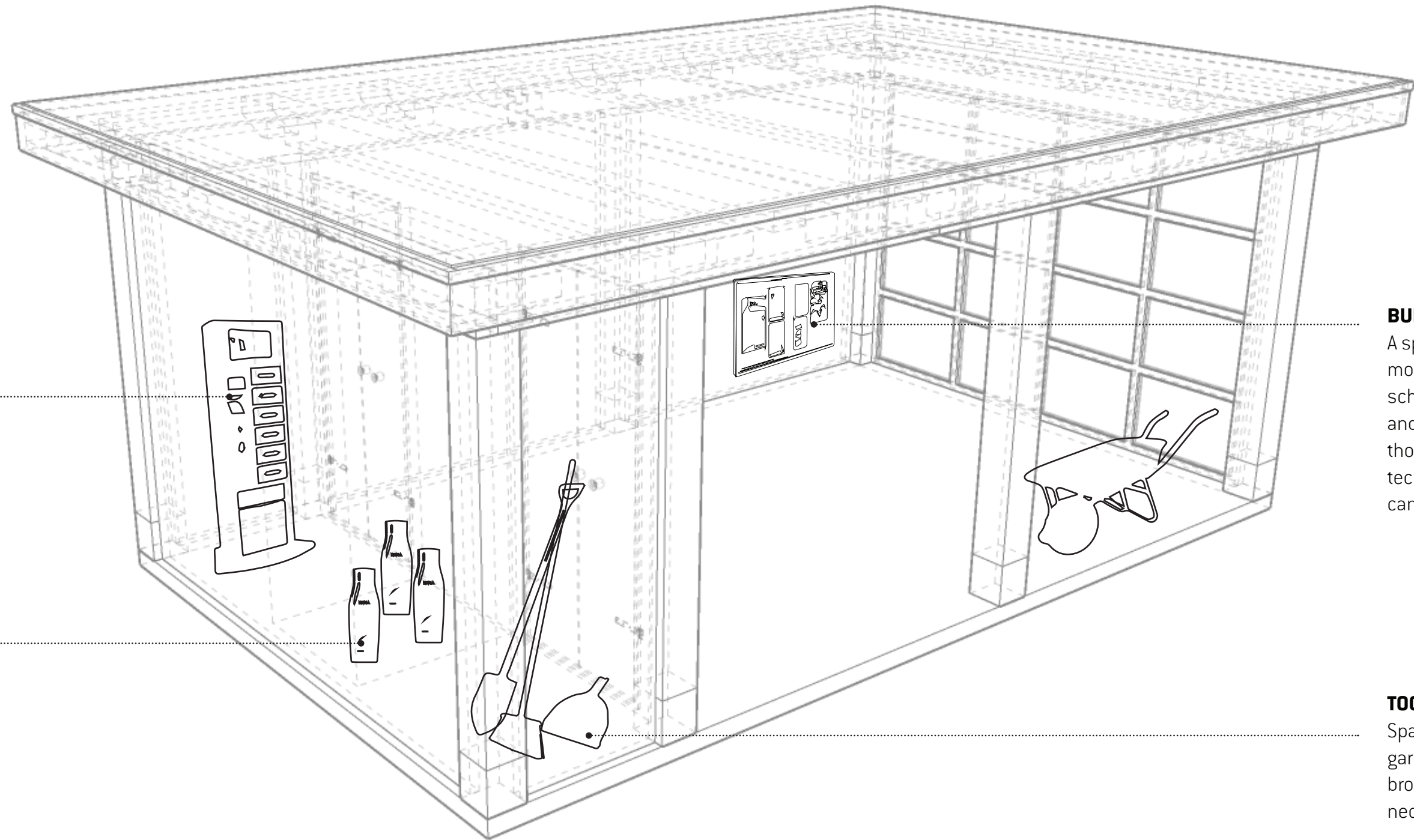
04 MAINTENANCE HUB: supply shed

CELL PHONE CHARGING

A safe, locked station where the unhoused can charge their cell phones at no cost.

PERSONAL SANITATION

A space where soaps, shampoos, toilet paper and other necessities will be provided by the Department of Public Works free of charge



BULLETIN BOARD

A space where the monthly maintenance schedule will be printed and updated so that those without access to technological resources can remain up to date

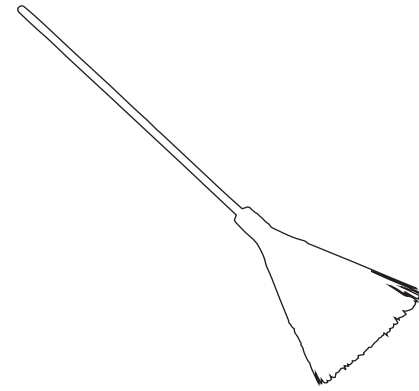
TOOL STORAGE

Space for rakes, shovels, gardening gloves, brooms, and other necessary tools

05 DUTIES + SCHEDULE

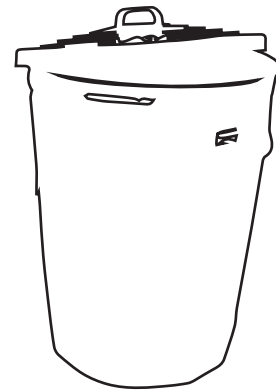
SIDEWALKS

Sidewalk tasks will include sweeping, raking, leaf pickup. The scope of this task will include collection of debris, bagging and removal of debris. Debris is to be sorted as trash, recyclables, and compost.



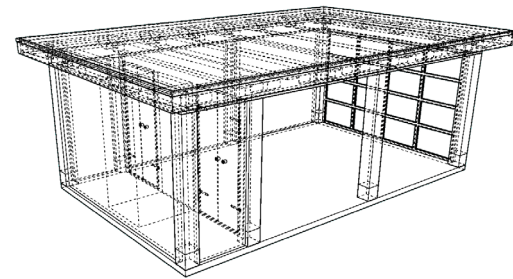
RECYCLE BINS

Recycle bins are to be emptied once per week around the entire park perimeter. Recycled materials are to be taken to the large bin located at the maintenance hub where LA SAN workers will dispose of collected materials.



SUPPLY SHED

The supply shed will need to be routinely sanitized and organized to retain general tidiness and cleanliness. Tools will be scrubbed once per month, and bulletin board will be updated during this time.



ORCHARD

After initial planting, Rec and Park and community volunteers will collaborate to maintain the health of the orchards. LA Rec and Park will prune, trim and manage disease. Community volunteers will water, weed and pick fruit. Fruit will be reserved for the unhoused population living at the park.



S	M	T	W	T	F	S

ECHO PARK LAKE MAINTENANCE VOLUNTEER SIGN-UP								
Hello and thanks for volunteering to maintain Echo Park Lake 1. Please sign up for a couple time slots during the month of January! 2. When you are finished and if applicable, please indicate both the areas of the lake that you were able to reach, and any observations.								
JANUARY	TASK	SIGNED UP (NAME)	LOCATION	OBSERVATIONS	TASK	SIGNED UP (NAME)	LOCATION	OBSERVATIONS
1/1/2020	SIDEWALKS				RECYCLE BINS			
1/2/2020	SIDEWALKS				ORCHARD			
1/3/2020	SIDEWALKS				ORCHARD			
1/4/2020	RECYCLE BINS				SUPPLY SHED			
1/5/2020								
1/6/2020								
1/7/2020								
1/8/2020	SIDEWALKS				RECYCLE BINS			
1/9/2020	SIDEWALKS				ORCHARD			
1/10/2020	SIDEWALKS				ORCHARD			
1/11/2020	RECYCLE BINS							
1/12/2020								
1/13/2020								
1/14/2020								
1/15/2020	SIDEWALKS				RECYCLE BINS			
1/16/2020	SIDEWALKS				ORCHARD			
1/17/2020	SIDEWALKS				ORCHARD			
1/18/2020	RECYCLE BINS							
1/19/2020								
1/20/2020								
1/21/2020								
1/22/2020	SIDEWALKS				RECYCLE BINS			
1/23/2020	SIDEWALKS				ORCHARD			
1/24/2020	SIDEWALKS				ORCHARD			
1/25/2020	RECYCLE BINS							
1/26/2020								
1/27/2020								
1/28/2020								
1/29/2020	SIDEWALKS				RECYCLE BINS			
1/30/2020	SIDEWALKS				ORCHARD			
1/31/2020	SIDEWALKS				ORCHARD			

SIGN-UP SHEET

Using this Google Excel doc, volunteers can coordinate maintenance tasks online. After one completes their maintenance task, they are asked to notate the location that the task was performed in (East or West lake areas), as well as any observations that were had. Work is congregated between F-M to avoid conflict with differing work schedules. For those who do not have access to online resources, a cell phone charging station will be available in the supplies shed, as well as a printed copy of this sign-up sheet, intended to be changed every first Monday of the month as part of the supply shed maintenance duties.

06 COLLABORATION POSSIBILITIES

While this community maintenance plan actively collaborates with Rec and Park and LA Sanitation, bringing these two agencies into the fold of more collaborative practices, there are many more partnerships possible. Some (but not all) of these organizations are listed below. Schools have the possibility to fulfill community service hours. Proximate community gardens can share resources and knowledge. Other parks with other maintenance programs may also share resources. This program is intended to increase communication behind the many agencies, organizations and open space management teams in the City of Los Angeles.

