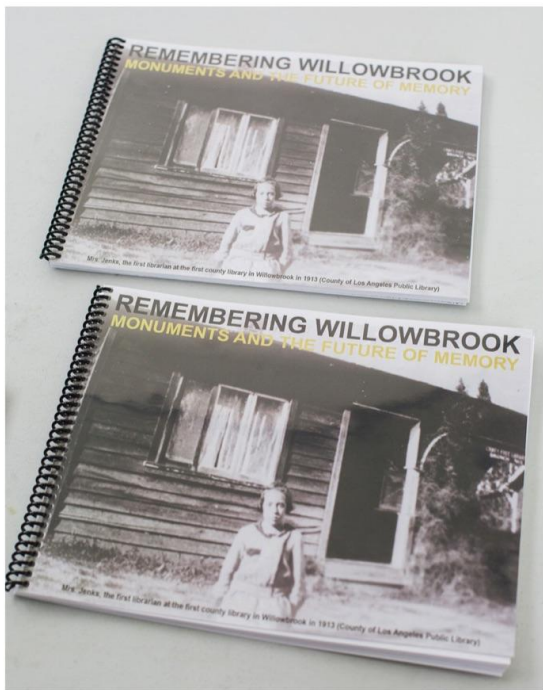




Willowbrook Monuments

USC Masters Program in Landscape Architecture + Urbanism
with LA Commons and Willowbrook Inclusion Network (WIN)
(funded by USC Arts in Action)

For more information, see **USC Landscape Justice Initiative**
website: <https://sites.usc.edu/landscape-justice-initiative/>



REMEMBERING WILLOWBROOK FIVE-PART STRATEGY

1 COMMUNITY ARCHIVE

A digital infrastructure in partnership with the Willowbrook Library that actively collects and archives oral stories and histories from the Willowbrook Community

2 CREATIVE COMMUNITY CORRIDOR

An identifiable, art-forward corridor that follows 120th Street, directing both residents and visitors from the Rosa Parks Metro Station to “Magic” Johnson Park

3 WILLOWBROOK MONUMENTS ALONG THE CORRIDOR

Monuments constructed by and with community artists that celebrate the practice of assemblage art specific to this area will integrate artifacts evocative of community stories and memories of Willowbrook; these monuments will dually serve as shade structures at key locations including bus stops

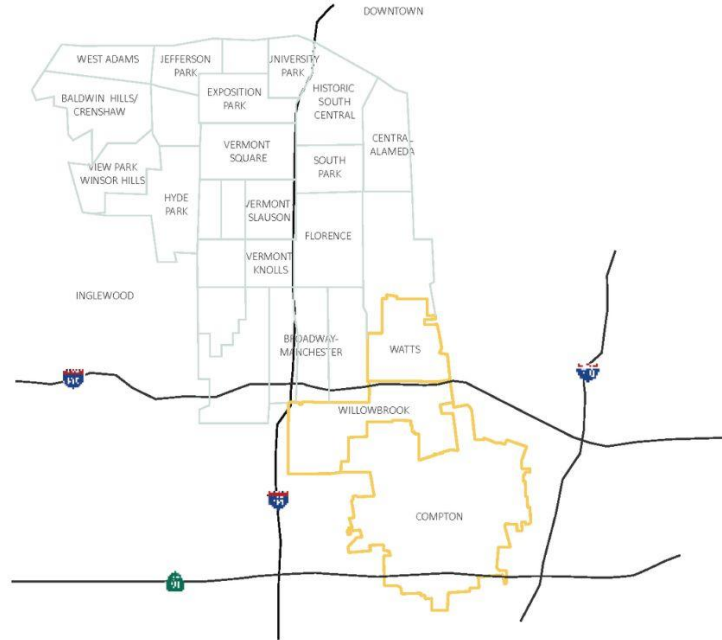
4 AUGMENTED REALITY MONUMENTS

Physical monuments will be enhanced through augmented reality (AR) and mixed media (XR) experiences that bring the dynamic and evolving community archive into the physical fabric

5 ART PROGRAMMING

Proposed art programming like the Art Hop in Willowbrook that activates spaces along the creative community corridor and in “Magic” Johnson Park

Willowbrook as ‘Gateway’ to South LA



“We’re a gateway to greater Los Angeles. Willowbrook is a gateway from the Imperial light to the El Segundo light which is like a mile....from light to light.... A lot of people pass through our neighborhood. And there is a lot of relationships between the city of Compton, Watts, and Los Angeles. All our surrounding communities is really, really tight because so many people pass through us, and so many people’s families originated in the Watts-Willowbrook neighborhood...”

- Reginald Johnson, Willowbrook Community Members Story Circle, 2021

WILLOWBROOK HISTORIES

NOVEMBER 2022

USC MLA+U

Located in the historic floodplain of the Los Angeles basin, the region was the homeland of the Gabriolino Tongva People. Fed by a willow lined Compton Creek, the land was flat and marshy.

EARLY 1800'S

When California came under Spanish and later Mexican territorial claims and many of the Gabriolino were forcibly removed from their homeland, this land became a part of Don Anastacio Ayila's vast 4,500 acre Rancho Tajuata. The historic willow brook was the known boundary and all of present day Willowbrook sits within these 4,500 acres.

1843

1890'S

The first subdivisions were built in Willowbrook. These subdivisions were rather large compared to other parts of the county and were broken up by fields, which gave residents ample room to grow their own produce.

1903

Subdivisions and suburban development increased rapidly after World War II. Willowbrook, however, suffered from a lack of public investment as white residents moved away and the region became predominantly Black and Latino communities.

1940'S

1903 marked the first official use of the name Willowbrook, recorded on the County Recorder.

The Watts Riots began on August 11, 1965, and lasted for 6 days. 34 people were killed. These events changed Los Angeles forever. The first death during the riots was recorded in Willowbrook.

1949

Paul R. Williams and Velma Grant designed and built 250 affordable single family homes intended for African Americans in the area.

Despite the positive movements to improve residents' lives, employment opportunities were still low in the 1980s. In addition, gangs which had always been active in the communities, suddenly grew and became much more violent as they entered the new, competitive territories of expanded drug trafficking.

1982

The 105 Freeway was constructed and divided the neighborhood.

1960'S-1970'S

A remarkable movement of Black artistic expression arose out of Watts and Willowbrook, which local artists such as Judson Powell, John Otterbridge, and Noah Purifoy carried forward through their work and teaching at the Watts Towers Art Center and the Communicative Arts Academy.

1972

Ujirna Village, a complex of mostly government-subsidized apartments, was constructed and opened in 1972. The 34 buildings once housed 600 people.

LATE 1960'S

In response to a lack of public investment and the 1965 Watts riots, numerous organizations were founded by local residents such as Parents of Watts and the Watts Labor Community Action Committee to provide the financial and social support residents needed to improve their quality of life, community's safety, and economic and educational opportunities.

1965

LATE 1980'S

Martin Luther King Jr. Multi-Service Ambulatory Care Center closed in 2007 due to a recantation of federal funding after the hospital failed a comprehensive review. This left the region without a hospital.

2007

2008

Supervisors ordered Ujirna Village to close and for residents to be relocated after tests showed potentially dangerous soils and water contamination.

2015

The Martin Luther King Jr Community Hospital, a 131-bed public community hospital opened in 2015 in a new \$200 million building.

2020

LA county completed an \$83 million renovation to "Magic" Johnson Park.

TODAY

A new community Masterplan is underway. Some longtime residents are excited about the new developments, but other residents fear their history and heritage will be lost among the many changes.



1909
The Willowbrook Mercantile Store



1913
The First Librarian at Willowbrook's First Library



1929
The Exterior of Willowbrook's First County Library



1965
Interior of the Damaged Willowbrook County library after the 1965 Riots



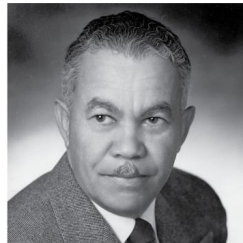
1986
The Watts-Willowbrook Parade

SELECT PROMINENT FIGURES



VELMA GRANT
REAL ESTATE AGENT, DEVELOPER OF
CARVER MANOR NEIGHBORHOOD

Velma Grant was an African-American real estate agent who understood that demand for home would rise after WWII and wanted to provide more housing options locally. She purchased 50 acres and hired Paul R. Williams as architect, and together they developed 250 quality homes for the new neighborhood that she named Carver Manor.



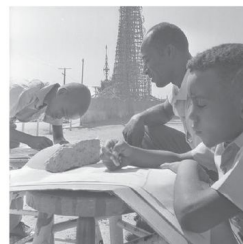
PAUL REVERE WILLIAMS
ARCHITECT

Paul Williams was one of the first African-American architects practicing in the developing Los Angeles area. Among his many remarkable accomplishments, he was commissioned by Velma Grant to design the homes for the neighborhood of Carver Manor with the help of VA loans. Williams sought to create homes that were based on quality craftsmanship and included subtle design details to add charm and character that residents continue to enjoy to this day.



MADAME A C BILBREW
MUSICIAN, POET, EDUCATOR

Madame A. C. Bilbrew was a celebrated musician and poet. She was an educator in the community of Willowbrook founding the Opportunity Workshop in 1963 as a cultural and education institution for residents. She was also a radio personality and became one of the first Black soloists to play on the radio.



JUDSON POWELL
CO-FOUNDER OF THE WATTS TOWERS
ART CENTER AND THE COMMUNICATIVE
ARTS ACADEMY

Originally a musician by training, Judson Powell became fascinated with the use of art as a tool for education, and co-founded the Watts Towers Art Center and later the Communicative Arts Academy with fellow artists such as John Outterbridge which fostered and inspired the blooming local Black arts movement of the 1960s and 1970s.

WILLOWBROOK MEMORIES

"I remember a time, prior to the '65 insurrection that the community was altogether different. I remember a Willowbrook that was a beautiful little jewel that connected to Compton, that was a part of South Central and a part of Watts. It was an area where you could freely walk in the streets. I used to walk from my house on 89th Street all the way to Compton where I used to work and was trained in photography. There were certain sounds that I remember: you would walk down the street and hear somebody playing Billie Holiday and the smells of fried chicken and on Sundays, you'd see people going to church. It was a beautiful community, but as things changed and the city evolved, it created issues that deprived people of certain rights after. After '65, a lot of things changed. To me, when it was predominantly an African American community, it had to survive so it had a strength. You had Black businesses, you had people who would exchange goods and services. After '65, a lot of that died."

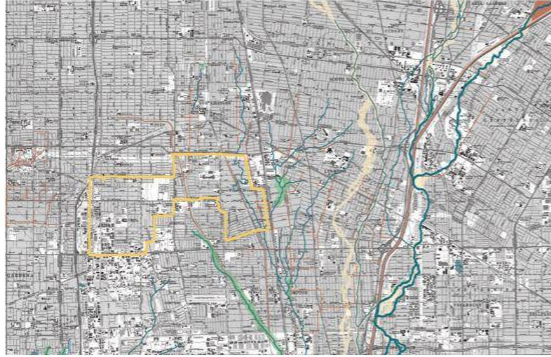
- George Evans, Willowbrook Community Members Story Circle, 2021

"I think we should also pay respect to our heritage around horticulture and food and land. That's a part of Willowbrook before other pieces came in... I remember when they came and cut all the trees down so the LAPD could fly their helicopters over and find people versus my earlier years when we had fruit trees. We could pull plums out of people's yards. It was a beautiful thing."

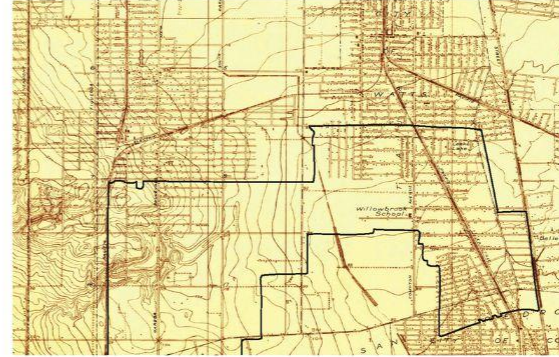
- Reginald Johnson, Willowbrook Community Members Story Circle, 2021

WILLOWBROOK'S HISTORIC ECOLOGY

NOVEMBER 2022



Historic Compton Creek Watershed in Relation to the Los Angeles River



A significant portion of Willowbrook remained undeveloped in 1924

Willowbrook was named after its landscape: widespread marshlands and willow thickets attributed to Compton Creek, a major tributary of the LA River. At one time, Compton Creek was a valuable water resource and a focal point of the agricultural settlements during the 1700's. Willows lined the now concrete clad creek, and the surrounding soil was very fertile. With development, however, the creek was sorely mistreated and the area was often used as a dumping ground. Ryan Millsap, a former professor at USC revealed, "I can state unequivocally [that Compton Creek] was, during the 1950s, the most polluted creek ever to be studied by the U.S. Department of the Interior."

COMPTON CREEK THROUGH THE YEARS



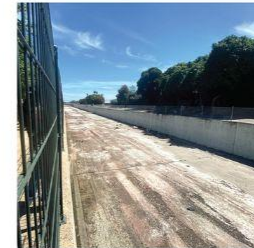
West Compton Blvd and Compton Creek, 1914



Compton Creek, 1947: still zoned for agriculture within Willowbrook



Alondra Boulevard Compton Creek Bridge, 1947



Compton Creek, today: many revitalization plans are currently underway

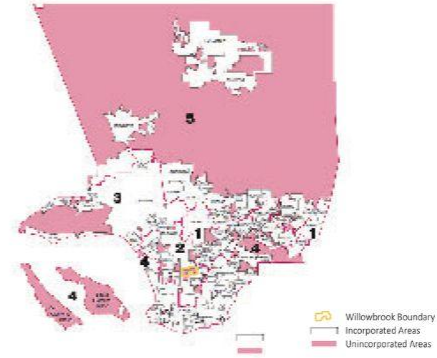
USC MLA+U



AND ITS AGRICULTURAL LEGACY



The Official Willowbrook Zoning plan, 1948 (left) and The Los Angeles Street Index, 1928 (right). In proportion to Compton and Watts, the developed 300 ft. lots are much larger in Willowbrook



Willowbrook is an unincorporated area within Los Angeles County. Typically, zoning laws in unincorporated areas are more relaxed, allowing for more opportunities for farms and gardens

In the 1890's, the first subdivisions were built in Willowbrook. These subdivisions were rather large compared to other parts of the county and were broken up by expansive fields, which provided residents plenty of space to grow their own food. Much of land around these subdivisions remained undeveloped until after World War II. Many of the large 300-foot lots remain; some residents still have horses, cows, roosters, and chickens. In the last decade, residents have turned some of the remaining open fields into community gardens, continuing Willowbrook's long agricultural legacy.

WILLOWBROOK COMMUNITY GARDENS



Rose Pickney at the Willowbrook Community Garden, which opened in October, 2014. This garden, among others in the area, are situated along the overhead power line corridor



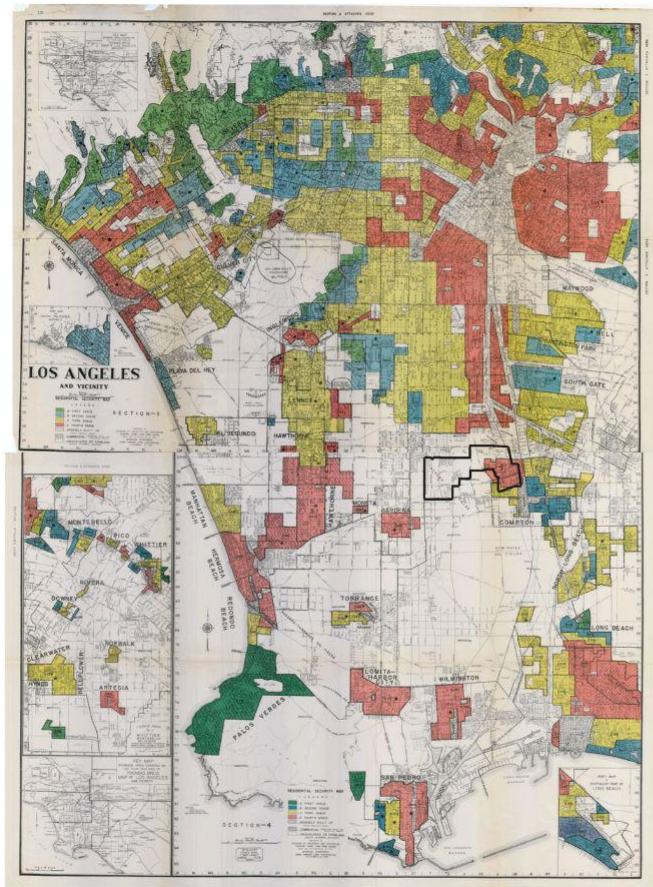
The Fellowship Garden of Love at Holmes on 118th and Holmes in Willowbrook opened in 2015



UNEVEN GEOGRAPHIES AND THE LASTING IMPLICATIONS

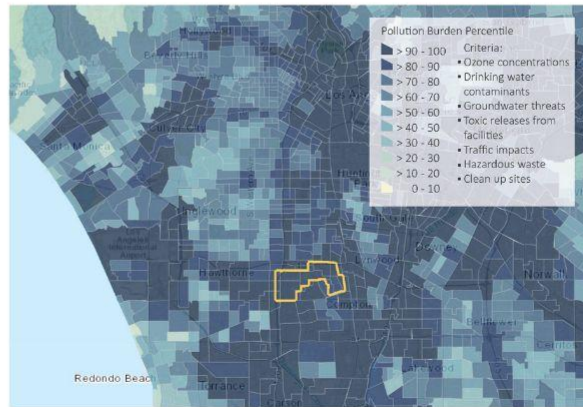
NOVEMBER 2022

USC MLA+U



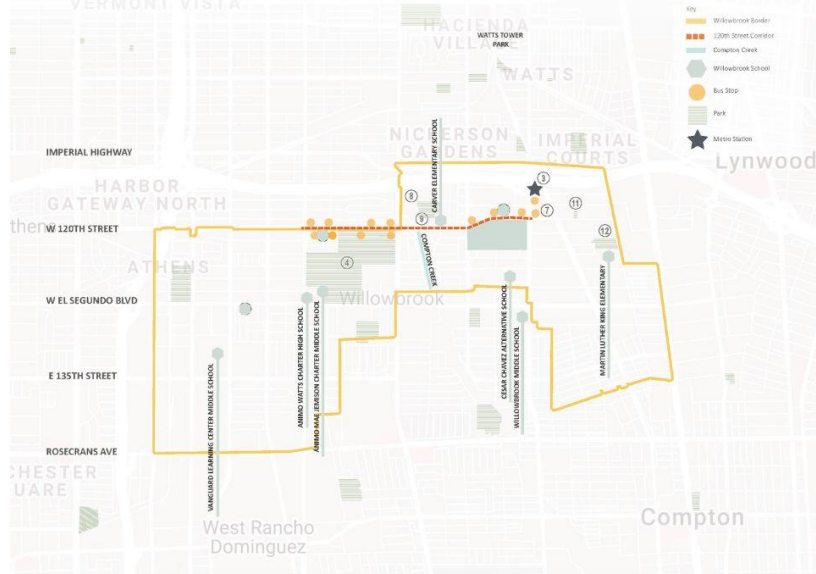
1939 HOLC "Redlining" Map of Los Angeles; in 1939, much of land within and surrounding Willowbrook was zoned for agriculture

Redlining originated in color coded maps created by the Home Owners' Loan Corporation (HOLC) in 1937 that defined property value of a given neighborhood. The maps were graded using four colors; red areas were deemed as "Hazardous." Following, lenders, government entities, and other services systematically used HOLC maps and definitions to decide lending, policies, and access in the practice known as redlining, which in many ways institutionalized racism through the denial of loans to people living in predominantly Black communities. The maps were based on assumptions about the community and were not accurate assessments of an individual's or household's ability to satisfy standard lending criteria. Since Black people were unwelcome in white neighborhoods, which frequently instituted racial restrictive covenants to keep them out, this policy effectively meant that Black people could not secure mortgage loans at all. At various times, this practice also affected other ethnic groups, including Latinos, Asians, and Jews. The assumptions in redlining resulted in a large increase in residential racial segregation and urban decay in the United States. Evident in the map below, which illustrates current pollution burdens experienced throughout Los Angeles, the lasting effects of redlining are rather significant; many designated red areas are overwhelmed with environmental burdens and the long term effects of systematic disinvestment. Communities including Willowbrook are burdened by this legacy.



The Pollution Burden experienced within the greater Los Angeles area and within Willowbrook; areas that were "redlined" are now some of the heaviest polluted areas in the city

SIGNIFICANT SITES AND ASSETS IN WILLOWBROOK



Willowbrook Library



Martin Luther King Jr. Community Hospital



Rosa Parks Metro Station



"Magic" Johnson Park



AC Bilbrew Library



Charles R. Drew University of Medicine and Science



Kenneth Hahn Plaza



George Washington Carver Park



Watts-Willowbrook Boys & Girls Club



Willowbrook Community Garden



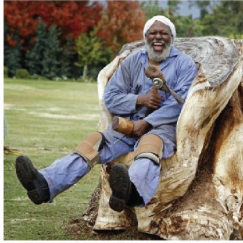
Faith and Hope Park



Mona Park

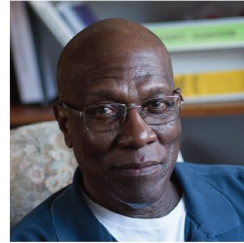
PLUS MANY MORE

SELECT WILLOWBROOK CONTRIBUTING ARTISTS



CHARLES DICKSON
ARTIST

"There are places you can go for fame and what have you that aren't necessarily that healthy for one's personality. And I've always understood, for some reason, that is O.K. to have an ego but its not too healthy to prop yourself in a position of greatness and grandeur where you forget who you are or where your gift comes from. So I try to share what I have."



GEORGE EVANS
ARTIST, EDUCATOR

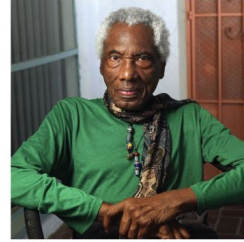
Committed to cultivating the next generation of young artists, George Evans formed the Youth Art Team in South L.A. in the 1990s and taught at Los Angeles Trade Technical College for two decades as a dedicated educator. The artist drew upon his decades of experience as a professor to conduct a series of arts workshops... with local high school students."

-Heidi Zeller



CECIL FERGUSON
ARTIST, ART CURATOR,
TRADITION BEARER

Over many years Ferguson rose through the ranks to become a highly influential art curator at LACMA effectively promoting the inclusion of African American history and arts. He co-founded the Black Arts Council, worked on several exhibits that highlighted African American works of art that traveled the world, and supported the work of local black artists.



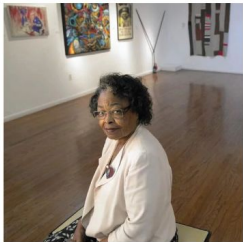
JOHN OUTERBRIDGE
ARTIST

"Art has the audacity to be anything it needs to be at any given time."

-John Outerbridge

"In high school, even before high school, people told me that I was an artist, and that's something that I never questioned."

-John Outerbridge



ROSIE HOOKS
ARTIST, DIRECTOR OF WATTS TOWERS
ART CENTER

"I think she has a real understanding of art and community art in all of its different facets.... She understands and is sensitive to the needs of the community. She's also sensitive to the artists' needs. She's able to navigate different circles and somehow make it all work."

-Rogelio Acevedo



DOMINIQUE MOODY
ARTIST

"When I assemble this eclectic mix into multilayered constructions, I make visible my dreams, memories and visions. In conjunction to my introspective muse, my works also reflect the social challenges of our times."

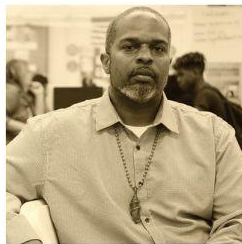
- Dominique Moody

AND WILLOWBROOK COMMUNITY LEADERS



ALICE 'SWEET ALICE' HARRIS
COMMUNITY ORGANIZER, FOUNDER AND
EXECUTIVE DIRECTOR OF PARENTS OF WATTS

Sweet Alice, as she is widely known, founded the organization Parents of Watts out of her own home in response to the pain and violence of the Watts Riots of 1965. Today the organization is run out of 8 different local residences providing resources, guidance, and training to help her fellow community members and particularly children and young adults access a better education, jobs, and an overall better quality of life.



REGINALD JOHNSON
FOUNDER OF THE WILLOWBROOK
INCLUSION NETWORK

Reginald Johnson founded the Willowbrook Inclusion Network in 2017 to help provide the resources residents needed, particularly men and boys of color, to improve their access to economic and educational opportunities, and to steer the community towards a more sustainable future. A major goal behind WIN is to ensure residents have a say over how their community is shaped.



PASTOR DELORES GLASS
ACTIVIST, PASTOR OF FELLOWSHIP
BAPTIST CHURCH

Pastor Glass has been providing much valued spiritual support for the community as well as providing aid to the community through the Concerned Citizens of Willowbrook who provide support and a food drive to citizens through the church. Pastor Glass has also acted as a strong advocate and activist for her neighbors to ensure that their concerns are voiced around how their community is changed.



ARTURO YBARRA
EXECUTIVE DIRECTOR OF THE WATTS
CENTURY LATINO ORGANIZATION

In co-founding and directing the Watts Century Latino Organization, Arturo has worked hard to empower the local Latino community and to bridge the gap between the Latino and African American communities. In collaboration with the Watts Labor Community Action Committee they host the annual Cinco de Mayo celebration.



RANDY HUGHES
PRESIDENT AND FOUNDER OF THE FRIENDS
AND NEIGHBORS COMMUNITY ASSOCIATION

Randy Hughes has dedicated many years of his life serving and directing the Friends and Neighbors Community Association (FNCA). FNCA provides financial resources and services to residents, has helped to stem gang violence and disputes, engaged in public safety and beautification projects, fostered public events, among many other things.

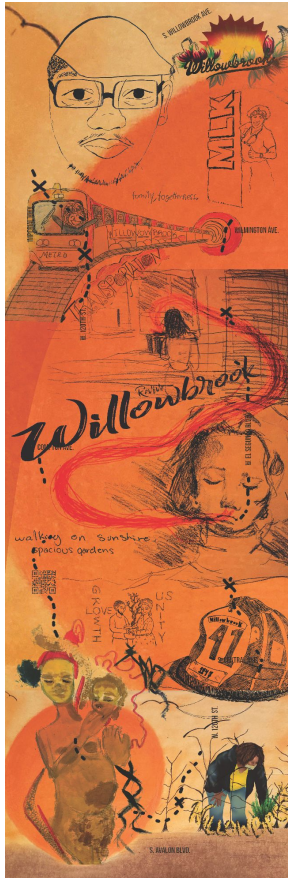


MINISTER SINETTA FARLEY
FOUNDER OF RESTORATION DIVERSION
SERVICES

Minister Sinetta Farley founded the Restoration Diversion Services in 2009 to help victims of sex trafficking in Compton find the help, support, and resources they need to escape the streets and build a new life.

PLUS MANY MORE PAST AND PRESENT

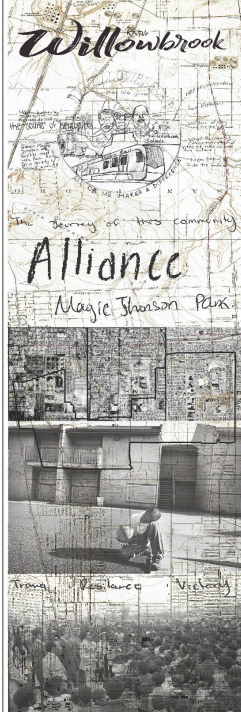




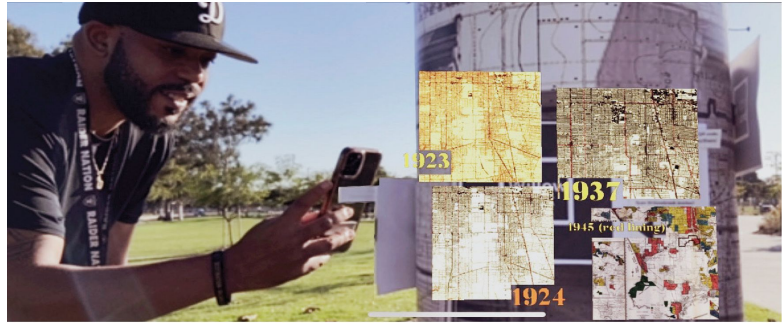
Revive Willowbrook



Doray what we gotta do.
 Willowbrook is walking on sunshine.
 It is "the hood" but it's not that of its original form.
 gateway to Los Angeles.
 unity in the community
 Step & go to Church
 Pastor Glass, annual jazz festival
 backyard barbeque
 Willowbrook
 The sound of the bus is the sound of hope.
 spacious gardens
 Pastor Glass who helped the community
 Family, joy, spirit, it is a special place.
 Trauma · Resilience · Victory
 Charles E. Drew
 Doray what we gotta do.
 Reginald Johnson
 the sound of helicopters.
 King Drew
 The sound of the bus is the sound of hope.
 The journey of this community
 Saw life and accepted the violence.
 this is my home! community.
 family, togetherness
 we love each other, we just need responsibility, not differences,
 equal access, get out of the hood.
 Alliance
 Magic Johnson Park.



Willowbrook Youth Artist Team (2021): Stephanie Owojori, Jade Sanchez, Celia Ochoa-Paredes, Jasmine Perry, Maria Lopez, Betzabe Vega, Ariadna Mancilla, Asha Kent, Jeydaliss Garcia, Aisha Cooper, Rosario Sarita, Ayma Vidal, Chelsie Barrios



Augmented Reality components





Proposal One

Community Canvas



Willowbrook needs a Canvas

There is an abundant creative energy and a tradition of art in this community, but negative stereotypes have been internalized by some of the community members.

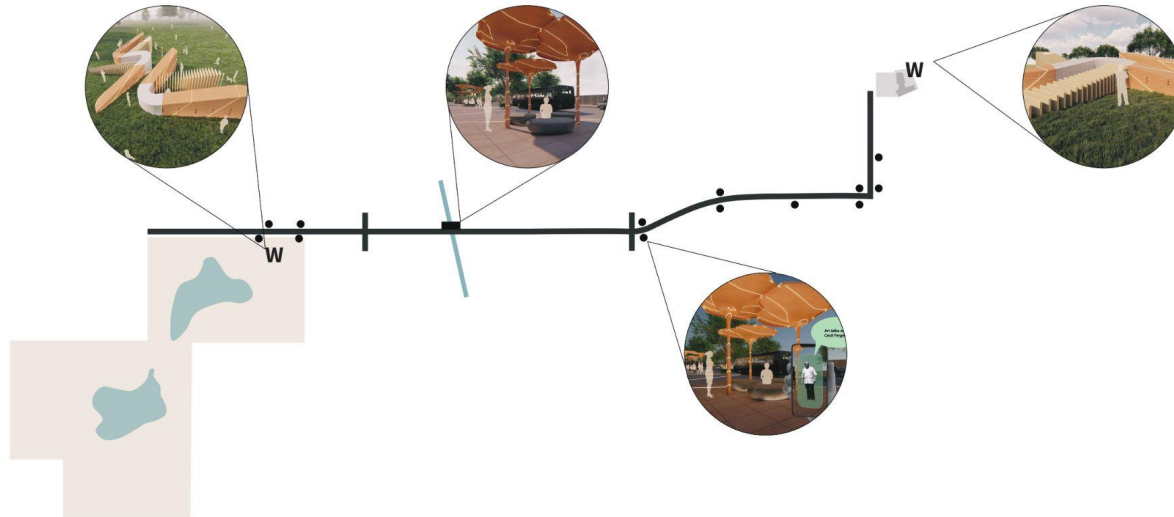
We want to empower local artists and all community members to share positive stories of Willowbrook on a Community Canvas

How can we tell better stories in the Willowbrook Community?

Physical Canvas

Augmented Reality
Canvas

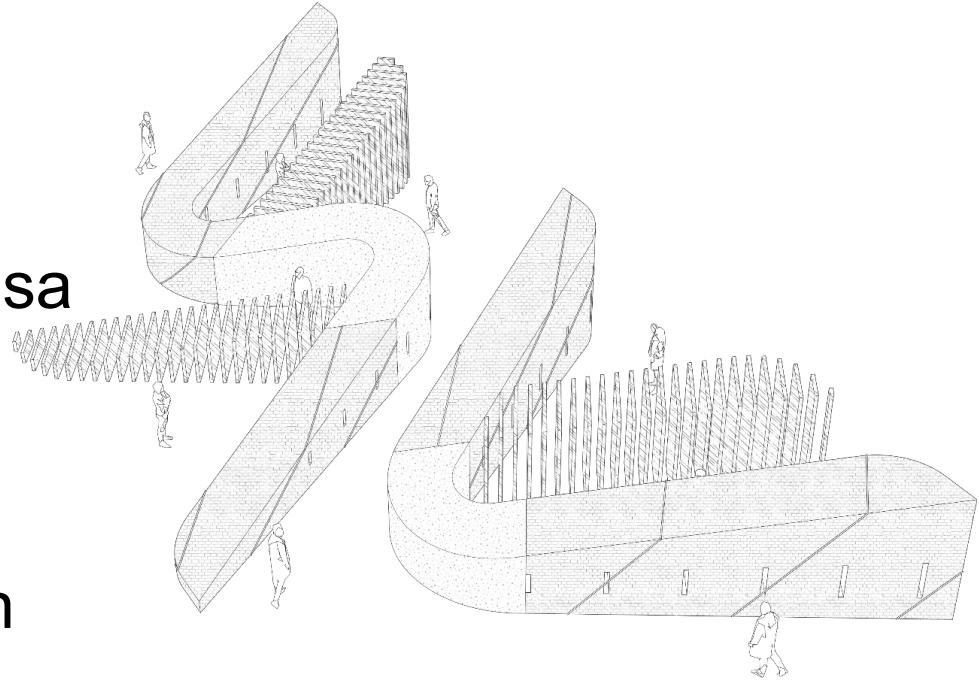
Story Corridor



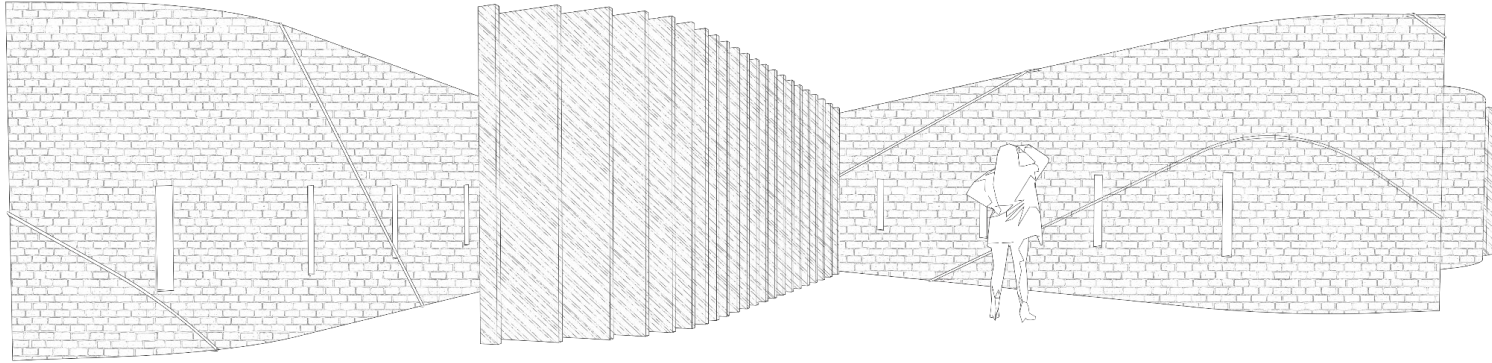
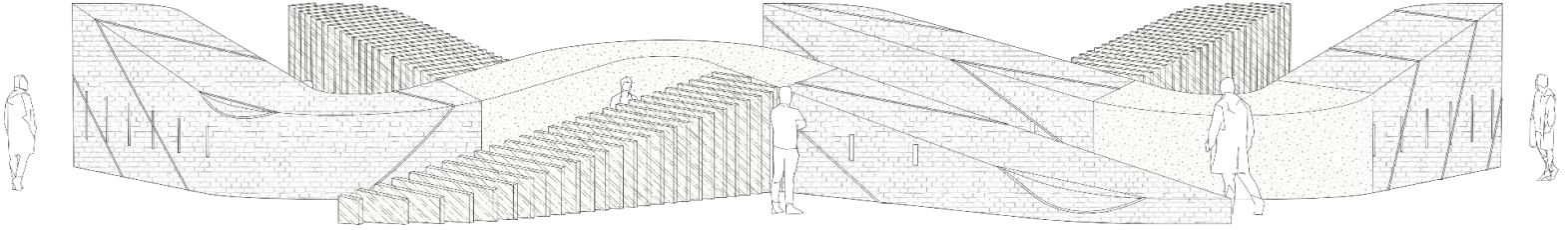
Community Canvas

There will be two physical canvases:

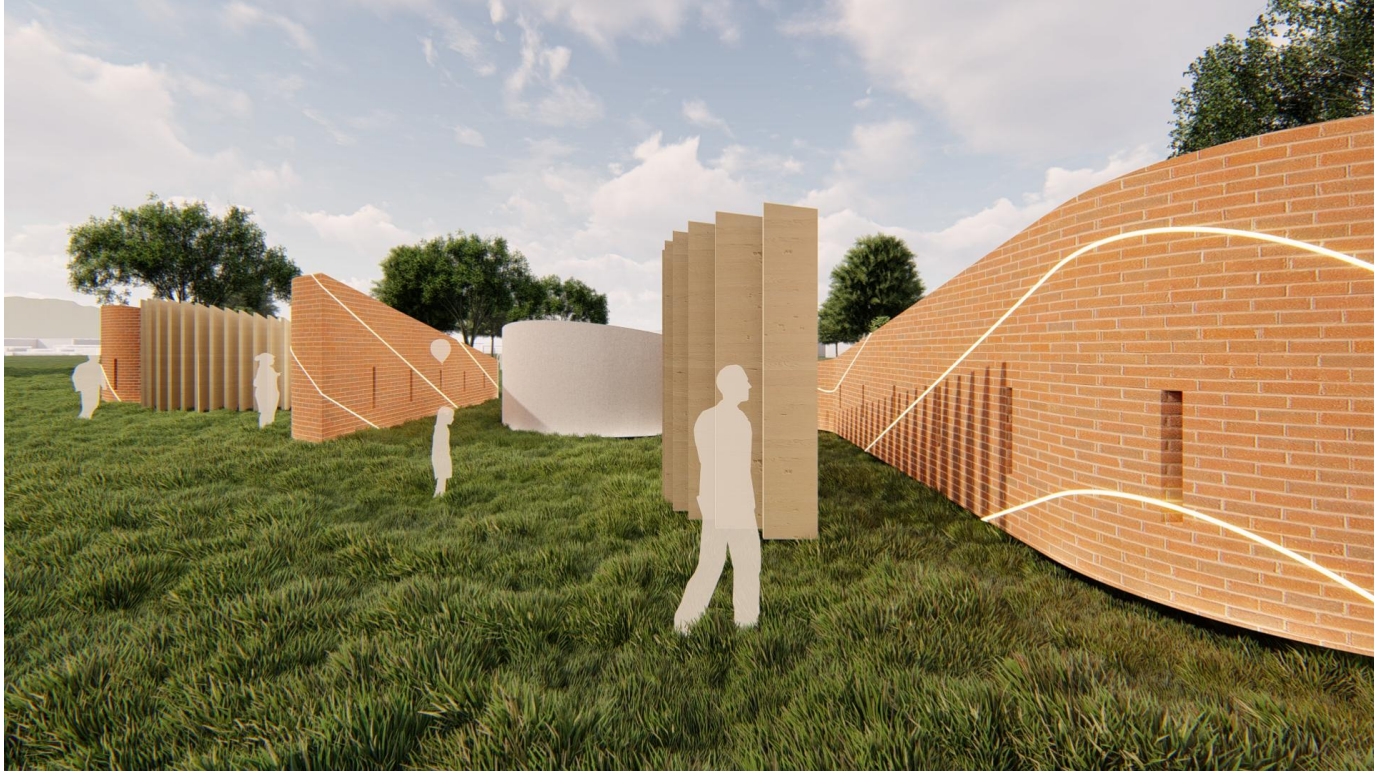
1. Willowbrook/Rosa Parks Metro Station
2. 'Magic' Johnson Park



Community Canvas



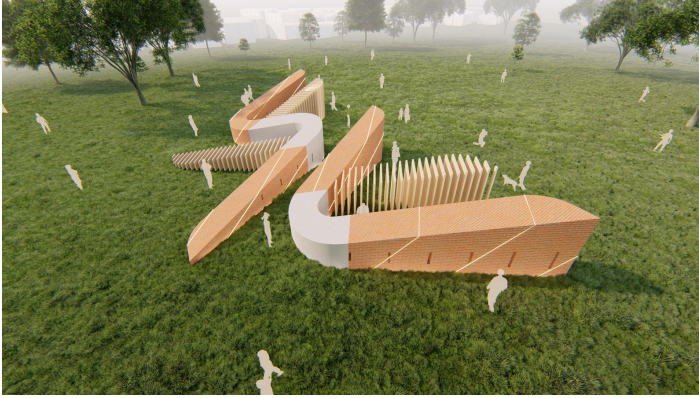
Community Canvas



NOVEMBER 2022

USC MLA+U

Community Canvas

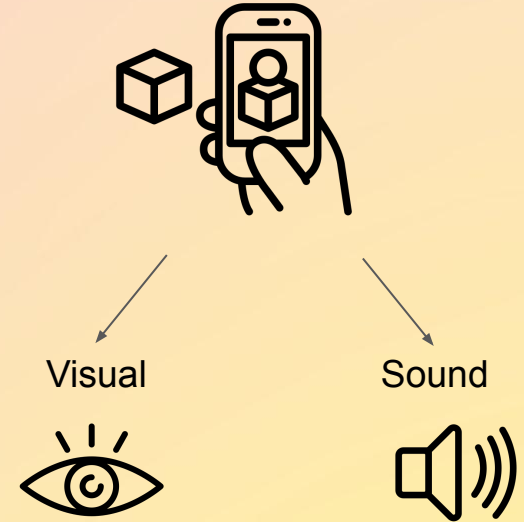


NOVEMBER 2022

USC MLA+U

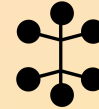
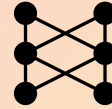
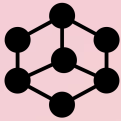
Digital Canvas: Augmented Reality

A digital extension to the physical canvas



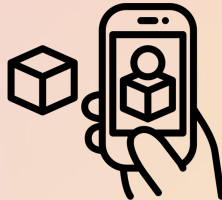
Non-Fungible Monument

- Digital artwork can be sold on NFT marketplaces
- Community designers can generate returns on their designs
- This can boost the economic value of Willowbrook



How does it work?

Personal Devices



QR Code



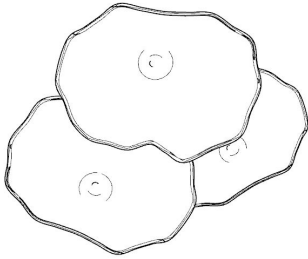
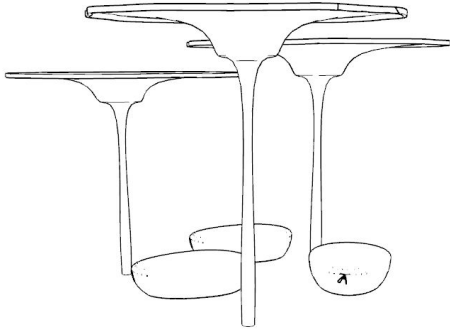
NFT App



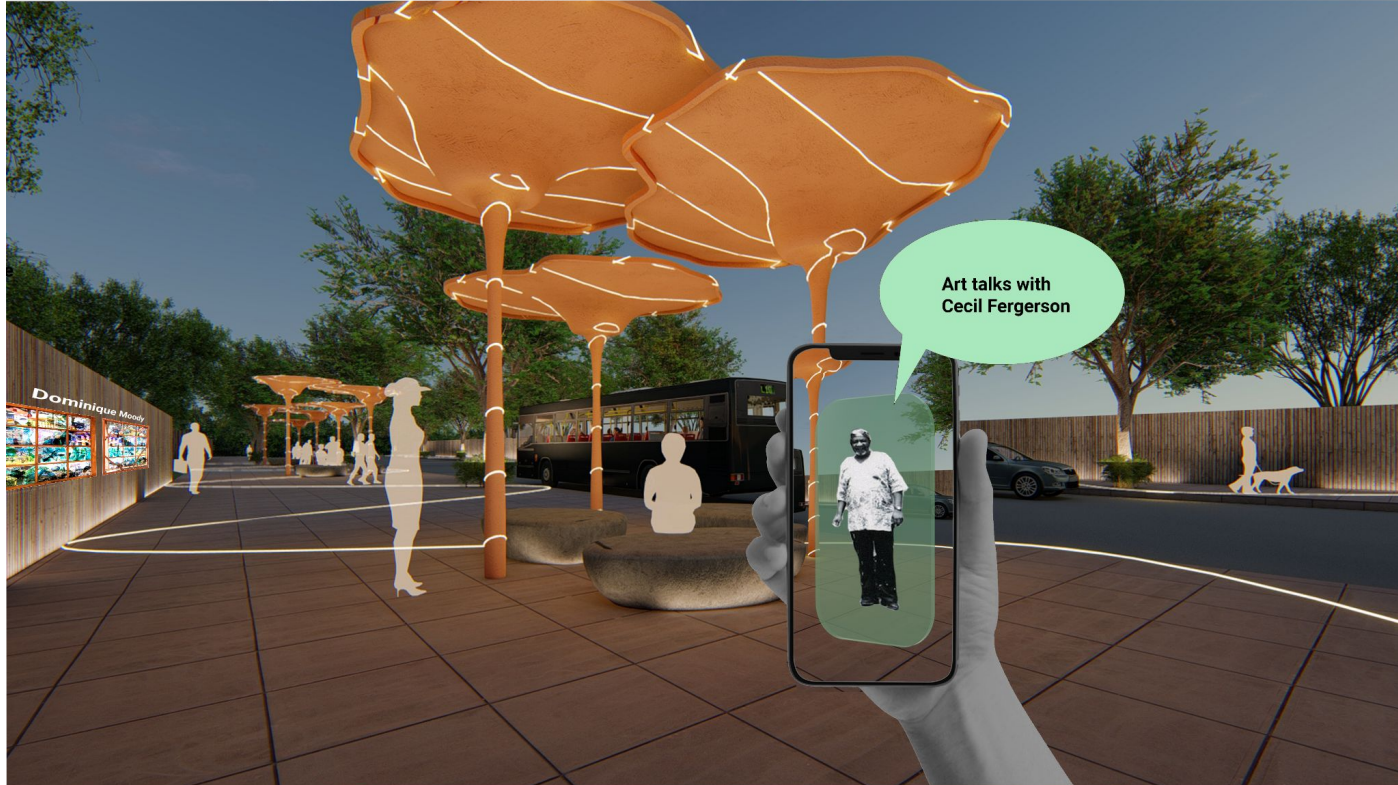
Story Corridor



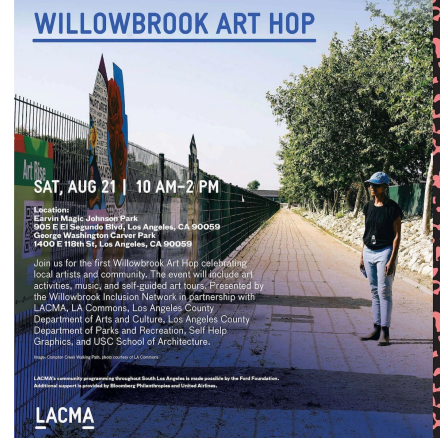
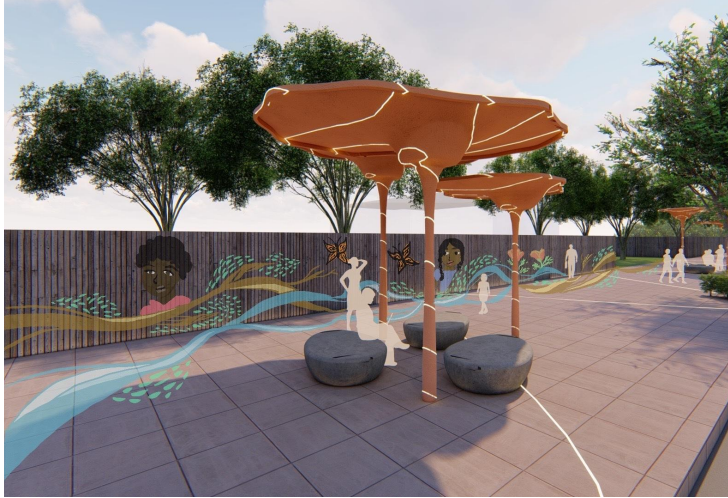
Bus Stops + Community Rest Stops



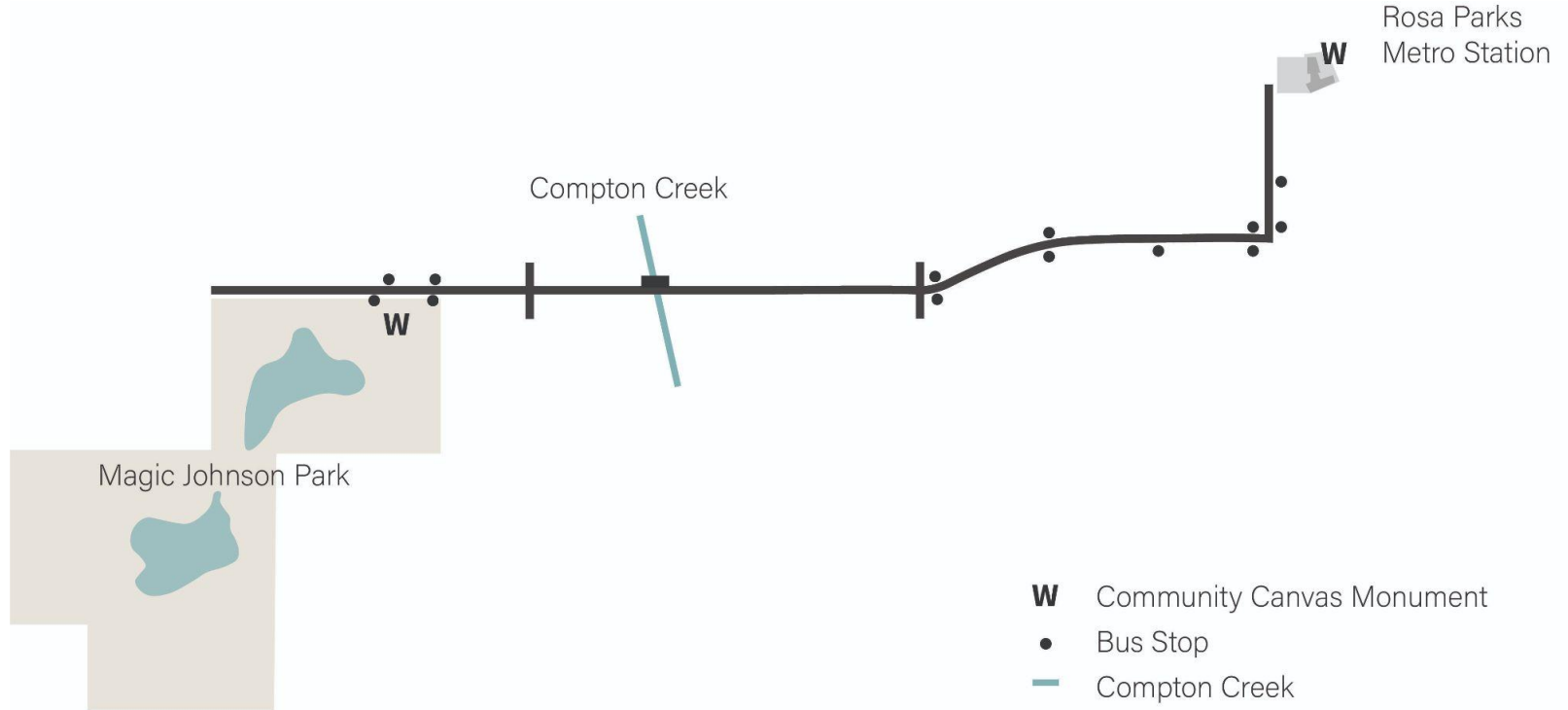
Story Corridor Enhanced by AR



Community Mural Sidewalks



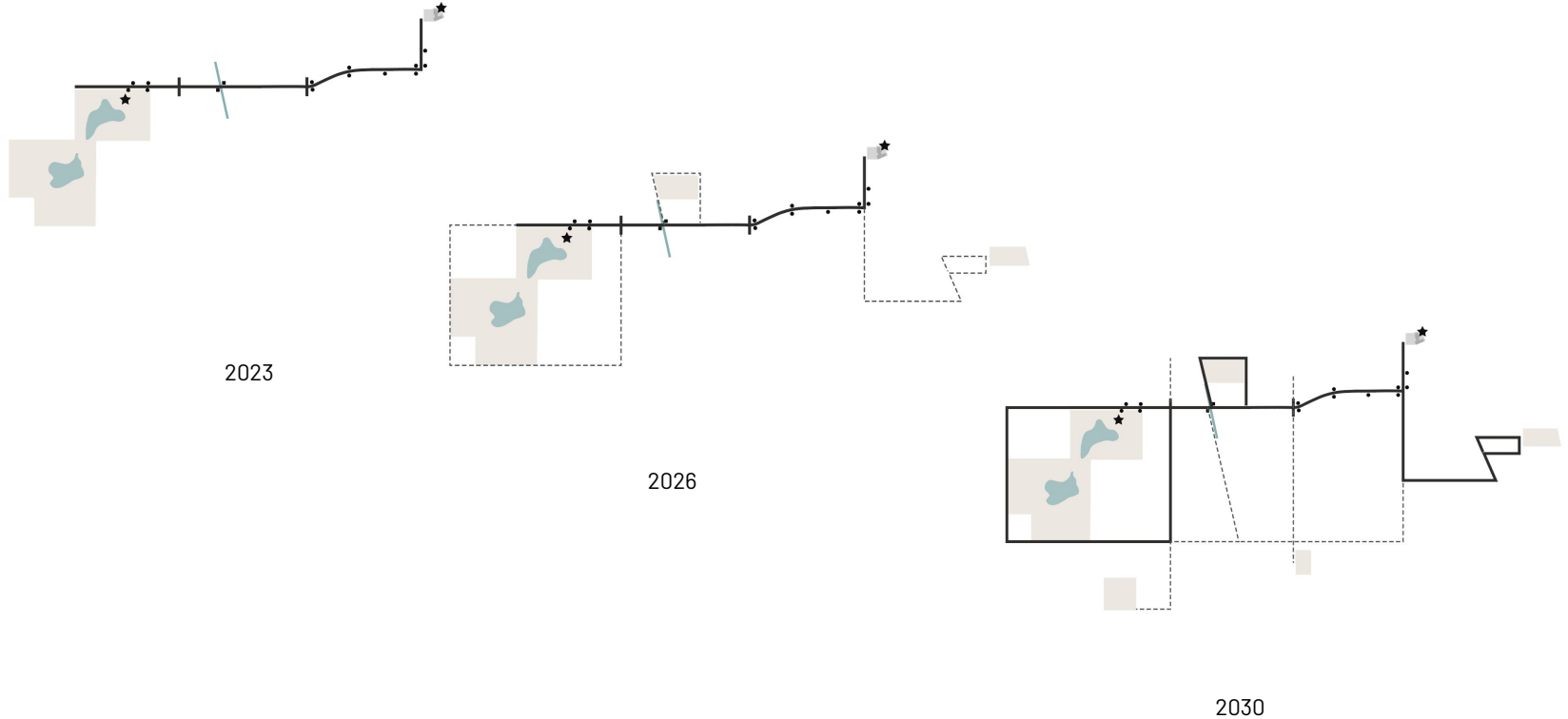
Story Corridor Map



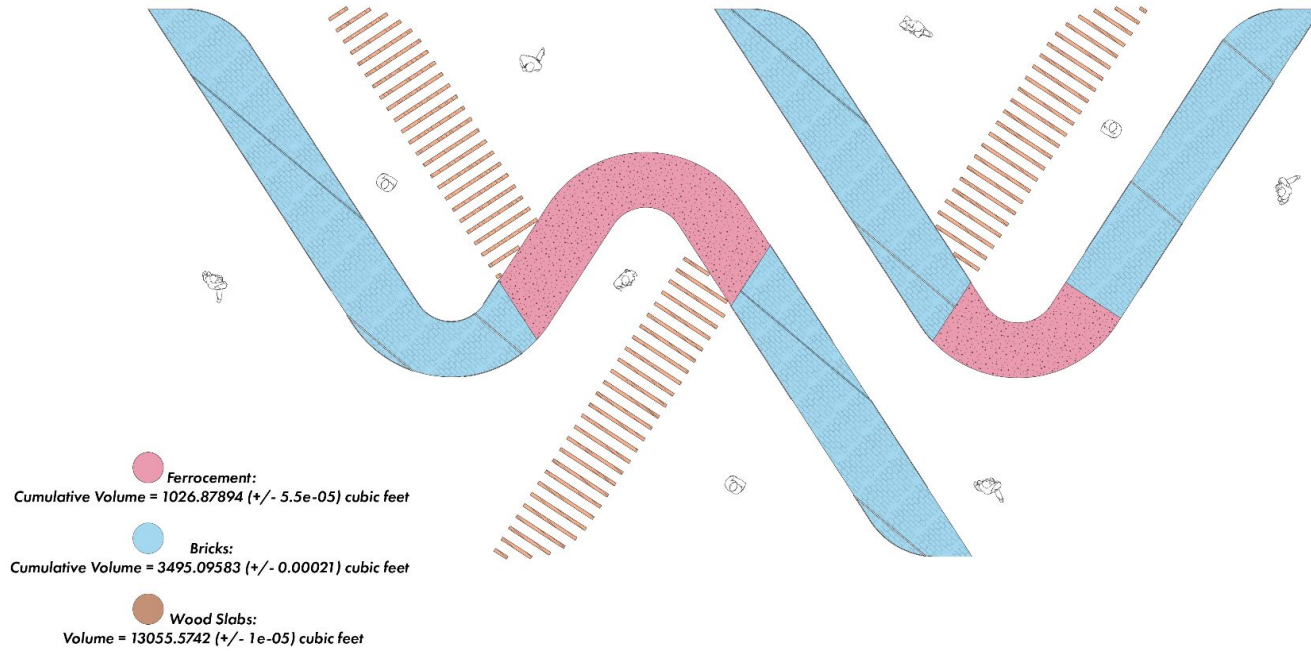
NOVEMBER 2022

Phasing: Expanding Safe Streets

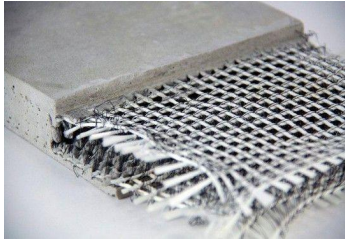
USC MLA+U



Materials



Materials



Ferrocement



Wood Slats

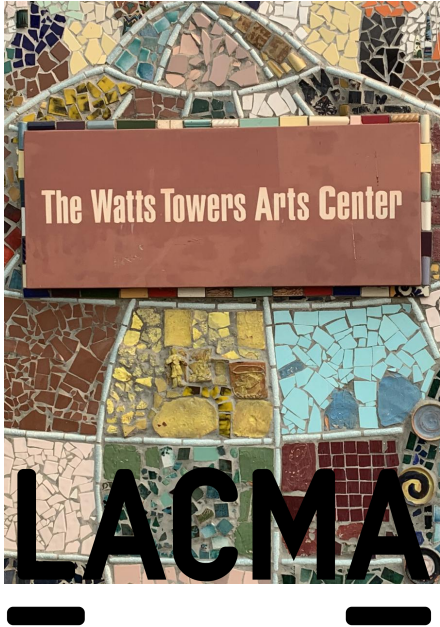


Brick



Sidewalk Paint

Community Partnerships





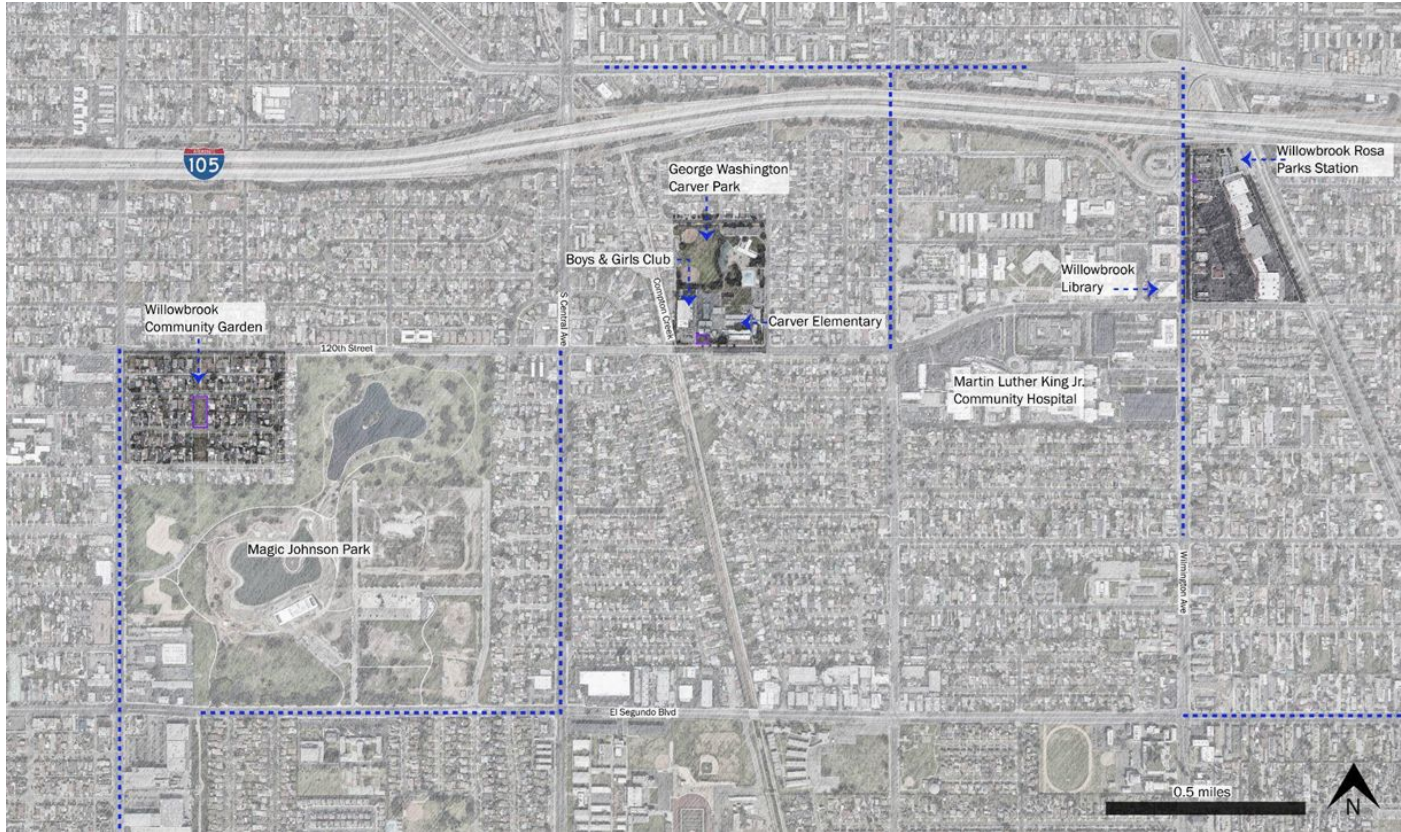
Proposal Two

Communi-tree Monuments

General Site Map

NOVEMBER 2022

USC MLA+U



Community Art Work

NOVEMBER 2022



USC MLA+U

- "Art Rise," Dominique Moody (with Other Artists)
- "Art Rise," Dominique Moody (with Other Artists)
- "Sea Dream," Dakota Warren
- "Pieces Together," Lawrence Argent
- "Ocean Journey," Matt Doolin and Paul Doolin
- Watt Tower

NOVEMBER 2022

USC MLA+U

Community Art Work

NOVEMBER 2022

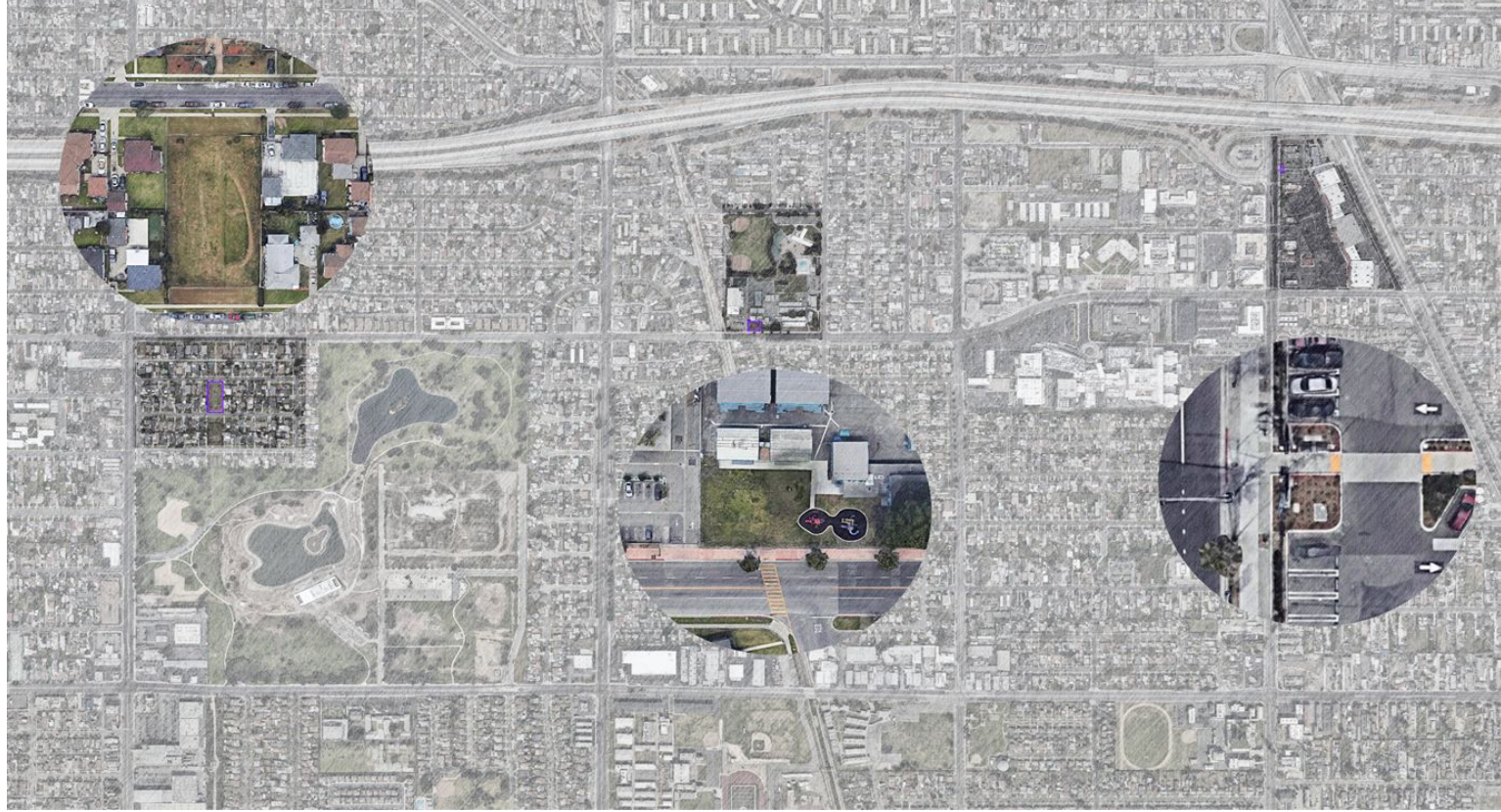
NOVEMBER 2022

USC MLA+U

USC MLA+U



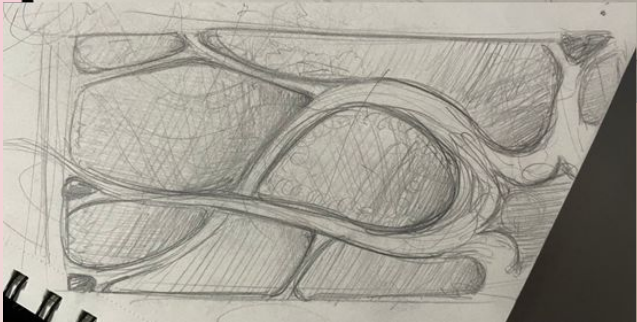
Concept



Concept

NOVEMBER 2022

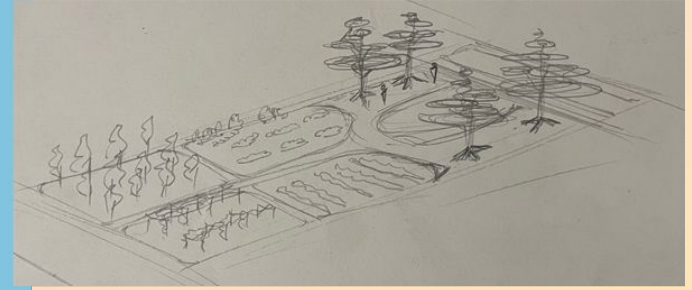
USC MLA+U



Plum Tree Monument

Site 1: Urban Orchard near Willowbrook Community Garden

NOVEMBER 2022



USC MLA+U

Plum Plans

Site 1: Urban Orchard near Willowbrook Community Garden

USC MLA+U

NOVEMBER 2022



USC MLA+U

NOVEMBER 2022

Plum Monument Section

Site 1: Urban Orchard near Willowbrook Community Garden

NOVEMBER 2022

NOVEMBER 2022



USC MLA+U

USC MLA+U

Plum Render Day

NOVEMBER 2022

USC MLA+U



Plum Render Night

NOVEMBER 2022

USC MLA+U

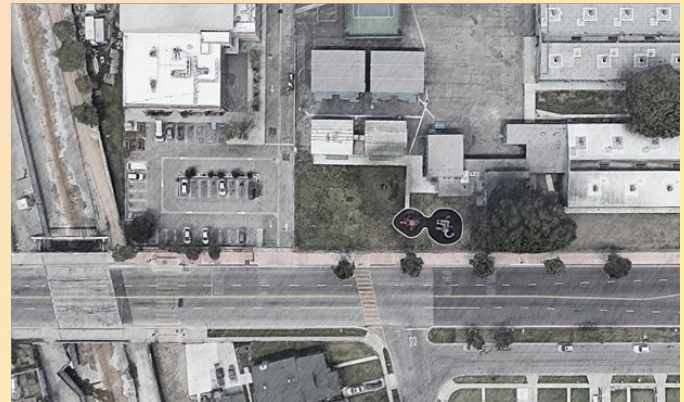


Willow Monument

Site 2: Carver Elementary and near Willowbrook Boys & Girls Club

NOVEMBER 2022

USC MLA+U



Willow Plan

Site 2: Carver Elementary and near Willowbrook Boys & Girls Club

NOVEMBER 2022

USC MLA+U



Willow Monument Section

Site 2: Carver Elementary and near Willowbrook Boys & Girls Club

NOVEMBER 2022



USC MLA+U



Willow Render Day

NOVEMBER 2022

USC MLA+U



Willow Render Night

NOVEMBER 2022

USC MLA+U



Witnessing Tree Monument

Site 3 Precedent: Willowbrook - Rosa Parks Transit Station

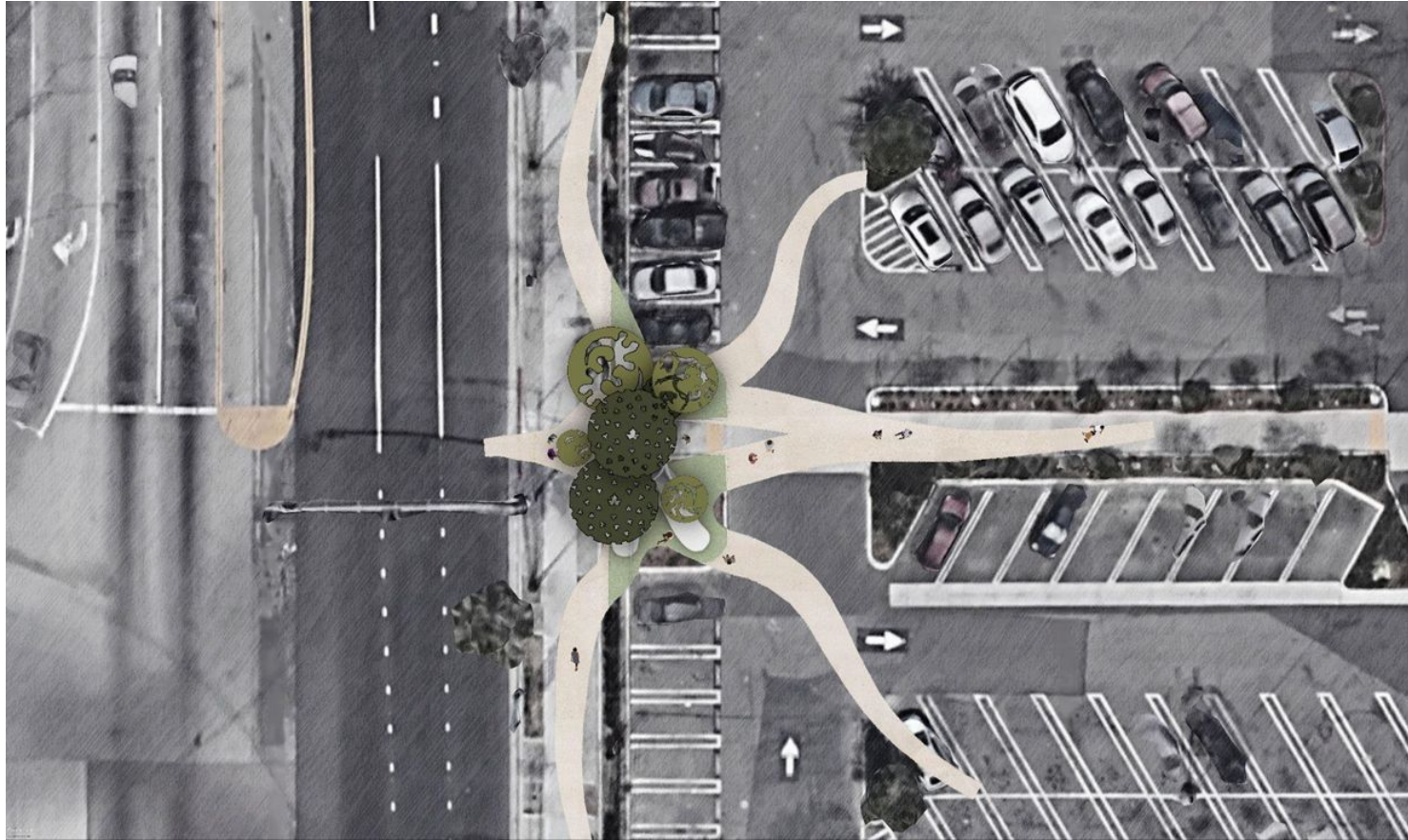
NOVEMBER 2022

USC MLA+U



Witnessing Plan

Site 3: Willowbrook - Rosa Parks Transit Station



Witness Monument Section

Site 3: Willowbrook - Rosa Parks Transit Station

*Adjacent to Willowbrook - Rosa Parks Station
Site 3: Witness*



NOVEMBER 2022

USC MLA+U

Witnessing Render Day

NOVEMBER 2022

USC MLA+U



Witnessing Render Night

NOVEMBER 2022

USC MLA+U





"STONE SOLIDARITY"

REPORT BY THE MEMBERSHIP BOARD (COMMISSIONERS OF SOCIAL, POLICE, SCHOOL AND THE YOUTH)

1970, 1971 - 1972



IDEOLOGY OF THE



YOUNG LORDS

FOR MURDER

Walter White Huey P. Newton

THE NEW YORK TIMES (1967) - A cartoon depicting the two men as symbols of the Black Power movement.

JUSTICE FOR WYDELL TRAWICK FIGHT POLICE ATTACKS!

Here's What You Can Do:

1. Write the police department and demand that they stop attacking students and workers.

2. Write the city government and demand that they stop supporting the police.

3. Write the state government and demand that they stop supporting the police.

4. Write the federal government and demand that they stop supporting the police.

5. Write the news media and demand that they stop reporting on the attacks.

6. Write the community and demand that they stop supporting the police.

7. Write the church and demand that they stop supporting the police.

8. Write the school and demand that they stop supporting the police.

9. Write the union and demand that they stop supporting the police.

10. Write the neighborhood and demand that they stop supporting the police.



Agencies Collaboration

Los Angeles Dept of Transportation
Los Angeles County Dept of Public Health
LA METRO

Engagement

Willowbrook Inclusion Network
Willowbrook Community Garden
LA Commons
Youth in Action
Cosecha Colectiva
Food Forward
Fallen Fruit Collective
Interference Archives

Materials Analysis

NOVEMBER 2022

USC MLA+U



Rebar



1" Pipes



Lighting Pole



Flag Pole



Concrete



Seed Banks



Integrated Color Concrete



Decomposed Granite



ACP - multicolor



Olive Green ACP



Forest Green ACP



Playsafe Rubber Mulch
2" inground Recessed Round Slim



Toe Kick Lighting



Tree Branch Lighting



Tree Branch Lighting



Ingrade Recessed Up Lighting



Cost Analysis

NOVEMBER 2022

USC MLA+U

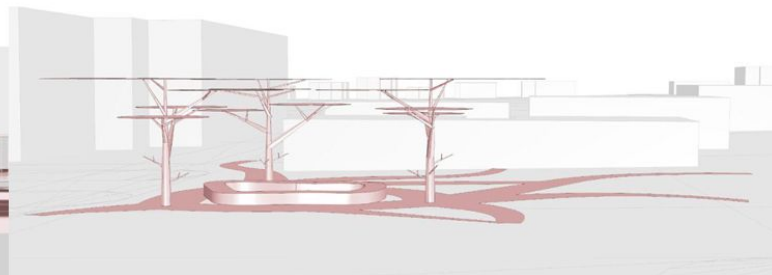
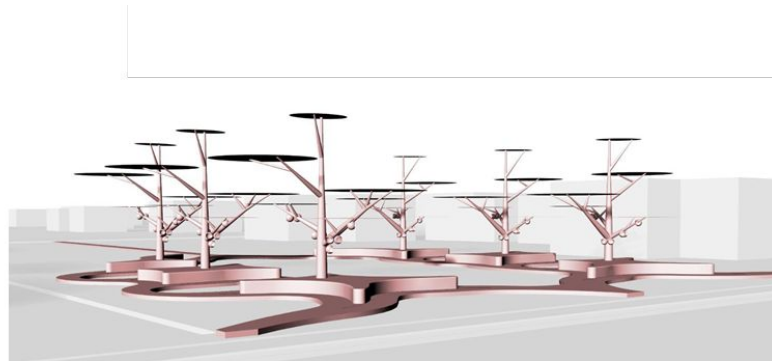
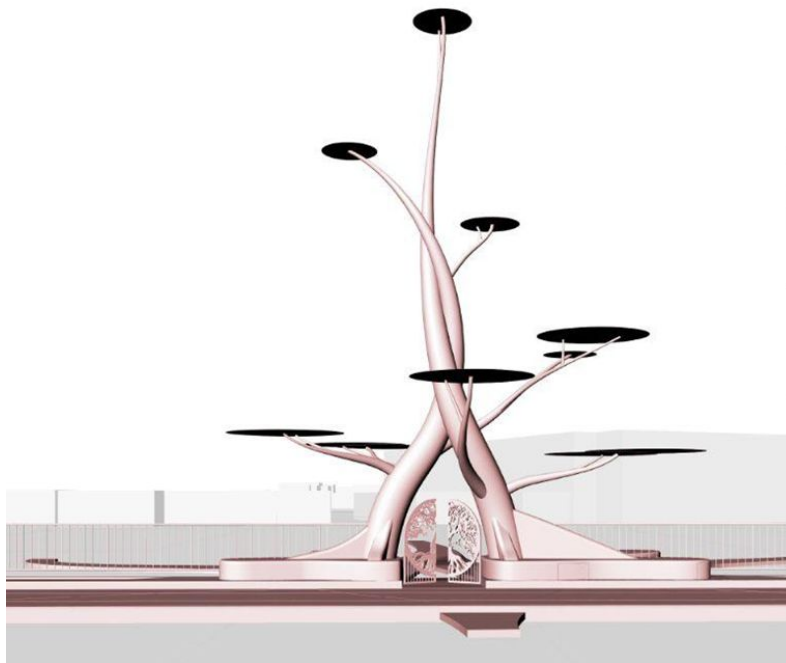
	Item	Quantity	Price
Site 1: Plum	Canopy - ACP	30 count	\$496.80
	Trunks (Lighting Pole)	6 count	\$7,568.04
	Branches (Flag Pole)	30 count	\$2,879.70
	Branches (Flag Pole)	90 count	\$659.94
	Decomposed Granite Pathways	3,000 sq. ft.	\$3,600
	Seed Pods	60 count	\$569.70
	Seating (Concrete)	1,170 cu. ft	\$13,022
	Lighting (Linear)	10 count	\$10,000
Site 2: Willow	Canopy - ACP		\$193.20
	Trunks (Lighting Pole)	12 count	\$3,233.34
	Branches (Flag Pole)	3 count	\$1,151.88
	Pathways (Playsafe Rubber Mulch)	3,284 sq. ft.	\$16,149
	Seating (Concrete)	641 cu. ft.	\$7,106
	Lighting (Linear)	7 count	\$10,000
Site 3: Witness	Canopy	14 count	\$128.80
	Trunks & Branches	317 sq. ft.	\$1,159.20
	Rebar	35 count	\$4,372.68
	Seating (Concrete)	561 cu. ft.	\$5,820
	Pathways (Concrete)	3,000 sq. ft.	\$43,281
	Gate	2 count	\$77.28
	Lighting (Linear)	6 count	\$8,000
Production	Engineering		\$4,500
	Assembly (Willow/Plum)		\$13,500
	Laser-Cutting		\$800
	Assembly (Witness)		\$5,000.00
	Misc.		\$5,000.00
		Total Cost	\$168,268.56



3D Model

NOVEMBER 2022

USC MLA+U





Proposal Three

Willowbrook in Motion

Site Map

NOVEMBER 2022

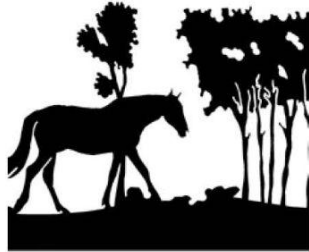
USC MLA+U



View in speed



Walking
2.5 to 4 miles per
hour



Cycling
14 to 18 miles per
hour

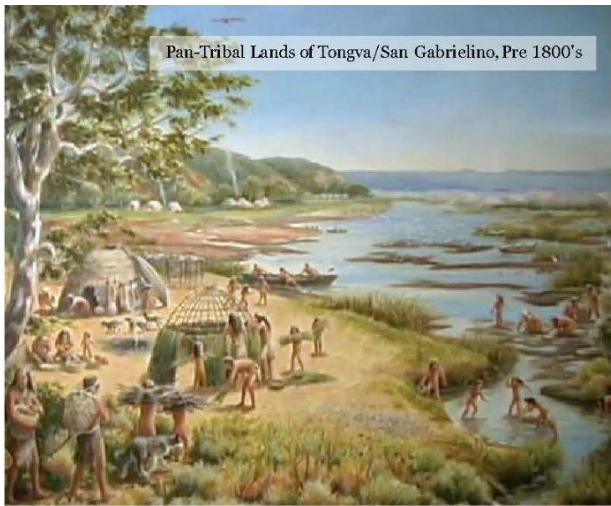


Typical car 30mph
speed on residential roads
or busy city roads .

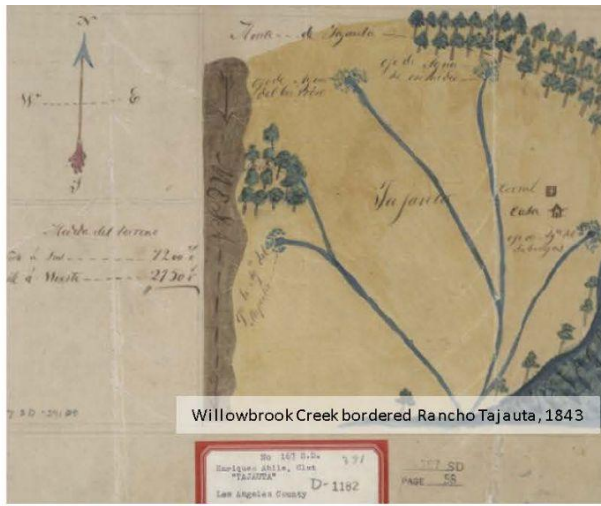


Fast car 50-55 mph
Vehicle on main road,
travelling reasonably fast





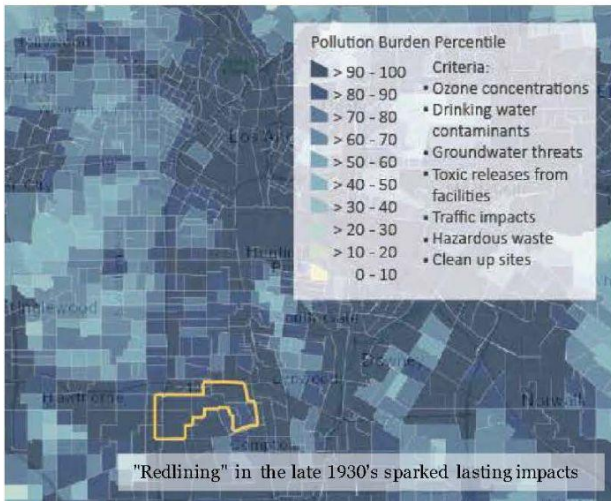
Pan-Tribal Lands of Tongva/San Gabrielino, Pre 1800's



Willowbrook Creek bordered Rancho Tajauta, 1843



Small farms on large subdivisions, 1890's



"Redlining" in the late 1930's sparked lasting impacts



Post Watts Riot/Rebellion, 1960's



Breaking ground at Earvin "Magic" Johnson Park, 2019

Site Plan

Site Plan





Option1



Option 2

Fence Panel – Option 1a



Fence Panel – Option 1b



Fence Panel – Option 2a



Fence Panel – Option 2b



Cost Analysis

Item	Quantity	Unit	Cost/Unit	Total Cost
Artist Compensation	100	HRS	50	\$5,000
Structures				
Bridge Barriers				
6ft Steel Silhouette Cutouts	30	EA	1,000	\$30,000
Steel Mesh	500	SQ FT	.70	\$350
7ft Steel Fence Post	30	EA	130	\$3,900
Installation	40	HRS	50	\$2,000
Electrical Utilities				
Silhouette Spotlights	20	EA	50	\$1,000
Electrical Work	40	HRS	50	\$2,000
Hardscape				
Pavement Treatment				
Paint	25	GAL	200	\$5,000
Street Closure	40	HRS	1,000	\$40,000
			Project Total	\$89,250

Option1

NOVEMBER 2022

USC MLA+U



Option2

NOVEMBER 2022

USC MLA+U



ART PIECES TREASURE HUNT

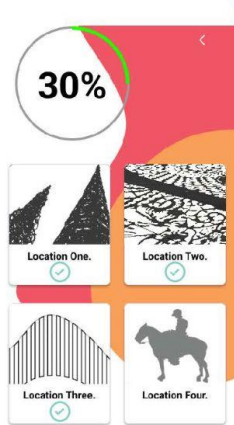
LACMA x
WILLOWBROOK



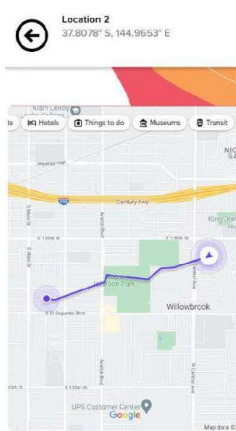
'Willow & Quest - Find art pieces around you''



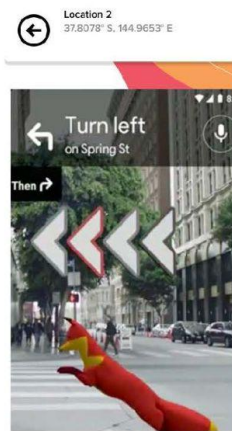
Step 1 Build library of art assets



Step 2 Build assets map



Step 3 Follow the path in AR



Step 4 Using AR to know more!



NOVEMBER 2022

USC MLA+U



Under Development



Composite Proposal

Combining strengths from each of
these three proposals into a single
scheme with alternatives

Email us!
alisonh@usc.edu

Thank You Team!



and... **GEORGE EVANS**, artist!!!