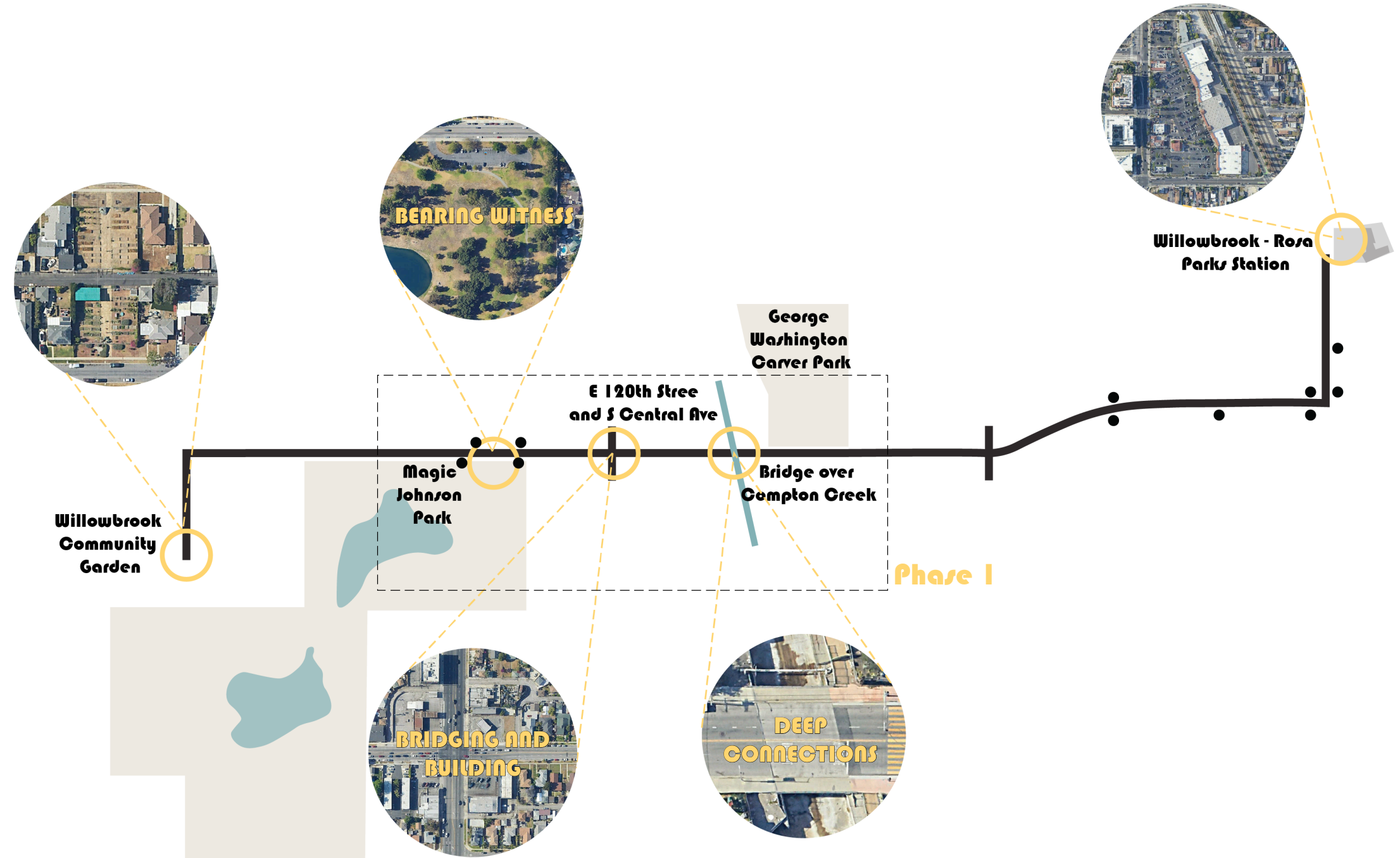
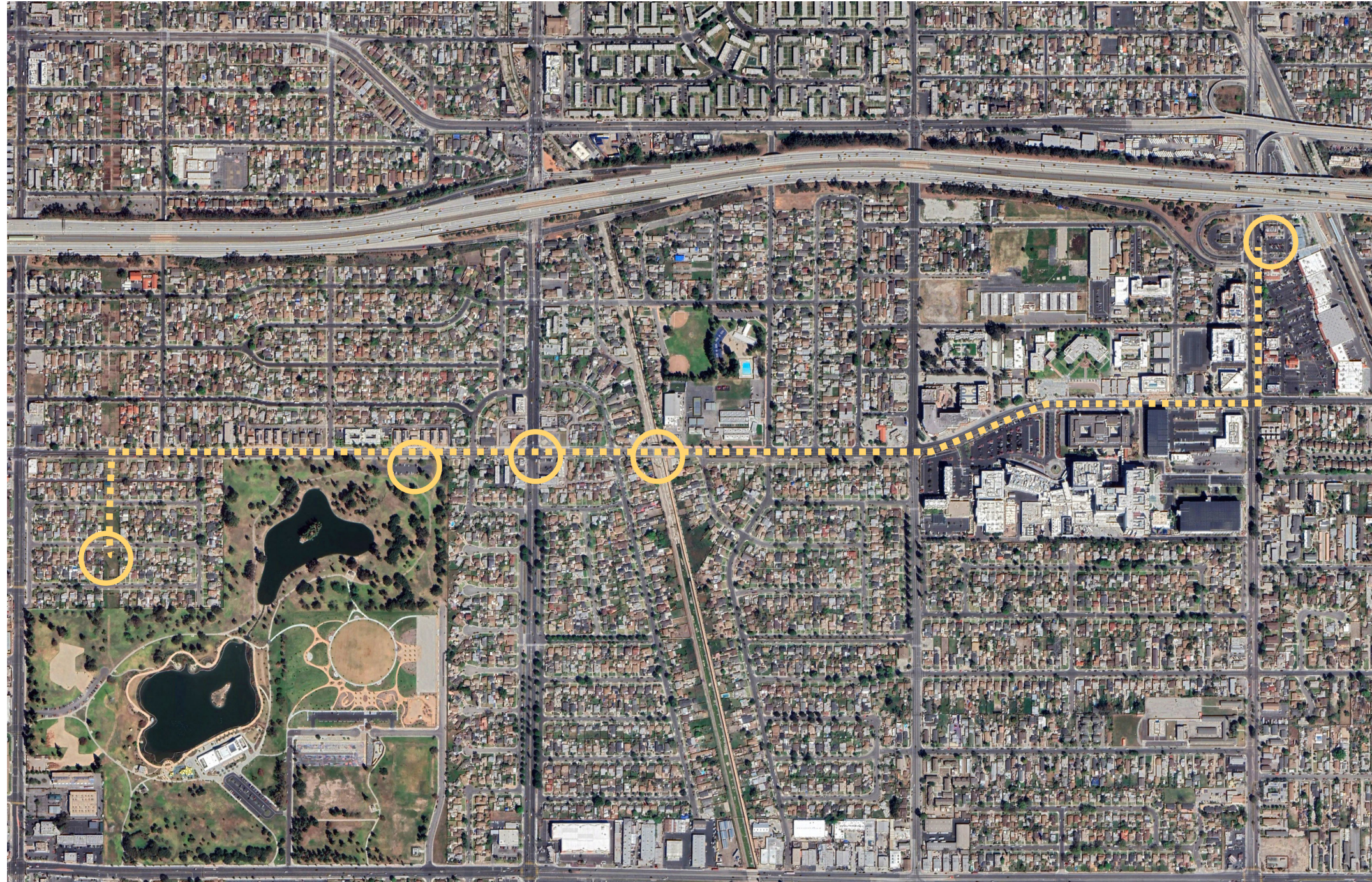


# Willowbrook COMMUNITY MONUMENTS

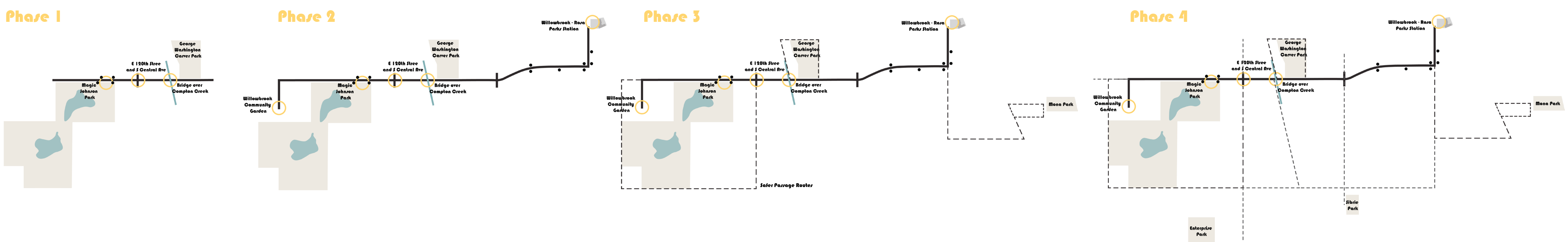
## The Story Corridor:



This project is a collaboration of artists, designers and culture-bearers committed to designing a series of monuments that acknowledge and celebrate the unique histories that have shaped the community of Willowbrook, an unincorporated neighborhood situated between Watts and Compton in South Los Angeles. The project builds on a three-year collaborative process between the Willowbrook Inclusion Network led by Reginald Johnson, LA Commons with Willowbrook artist and community elder George Evans, and Professors Alison Hirsch and Arousiak Gabrielian of the USC School of Architecture. The intention of the monuments and

the connective "storycorridor" connecting them on 120th St is to contribute to correcting the public narrative of Willowbrook from one constructed by the media over generations to one that celebrates the richness of the area's past and present, and as it develops into the future – as a center of Black life and culture, and as a place that has transitioned into a mixed Black-and-Brown community with diverse stories to share. The hope is these cultural interventions challenge the traditional monument dedicated to often oppressive narratives of the past and, instead, bring presence to people and places whose important stories have not been widely told.

## How will the Corridor extend?



## What will the corridor consist of?

### Community monuments

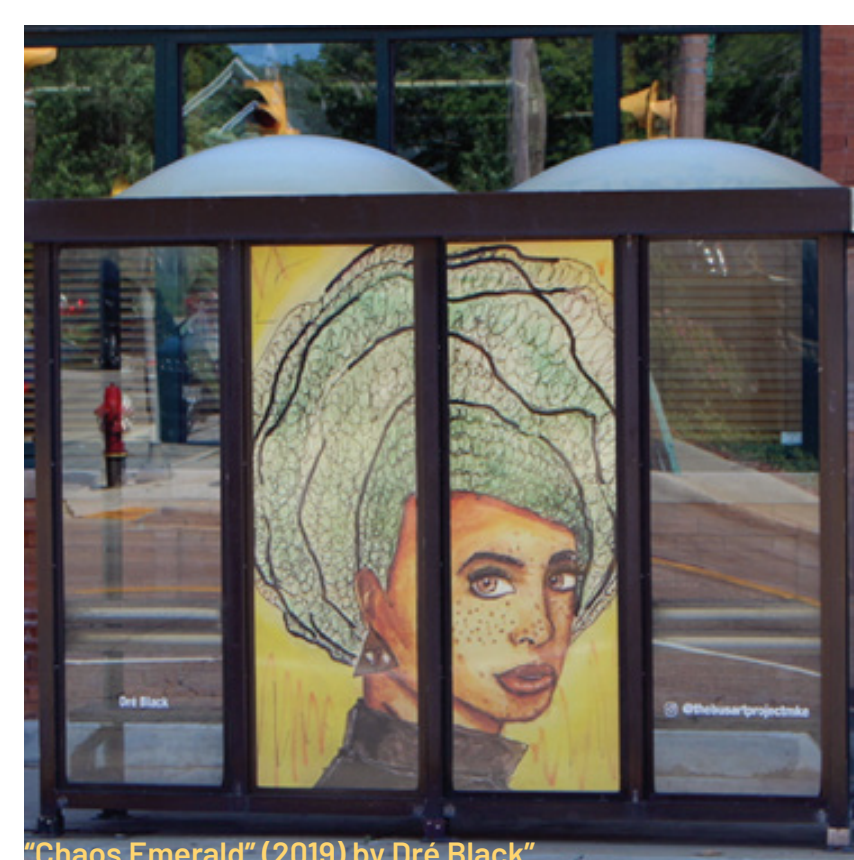
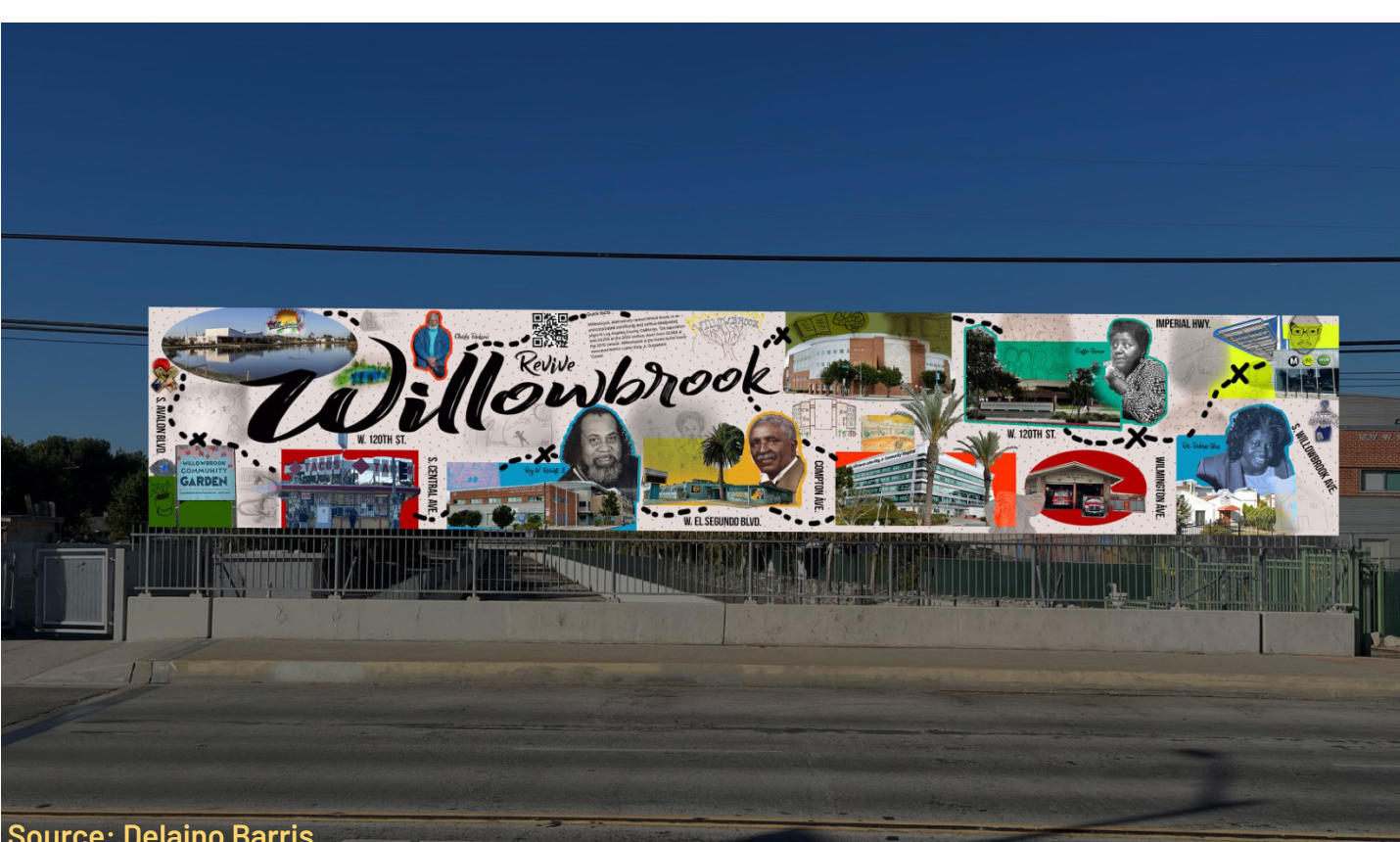
The monuments include: (1) "Bearing Witness," a monument recognizing challenges overcome in the community situated near the site of Ujima Village, a housing development that had to be torn down due to a public health crisis from legacy contaminants in the soil from previous industrial use; (2) "Bridging and Building," situated at a critical gang line that celebrates the people of Willowbrook that have bridged and built the community into the culturally rich place it has become; (3) "Deep Connections," situated on the bridge over Compton Creek, the impetus for the community's origins and celebrating its ecological and agricultural histories of relations between the people and the land.

### Pathways and Rest Stops

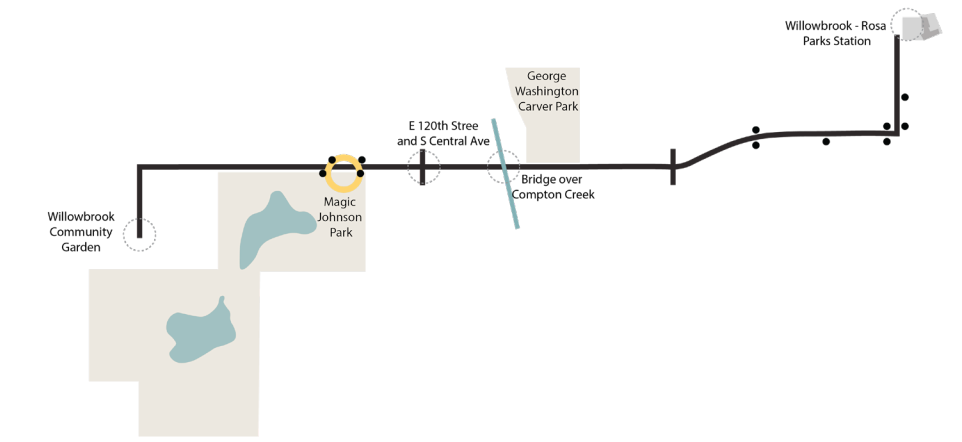
120th Street is the primary spine linking Willowbrook's east and west side, which have historically been divided by gang activity and general development and investment patterns. The "story corridor" will be punctuated by the monuments but complemented by rest stops in the form of bus shelters that tie the monuments together and enforce the stories of the place while providing critical shade needed through the community. Phase One (above) connects Earvin "Magic" Johnson Park on the west side to Carver Park and Carver Elementary School on the east side. The corridor then extends and connects the Safer Passage to School routes and ultimately stretching from Athens Park (west) to Mona Park (east).

### Community Archives

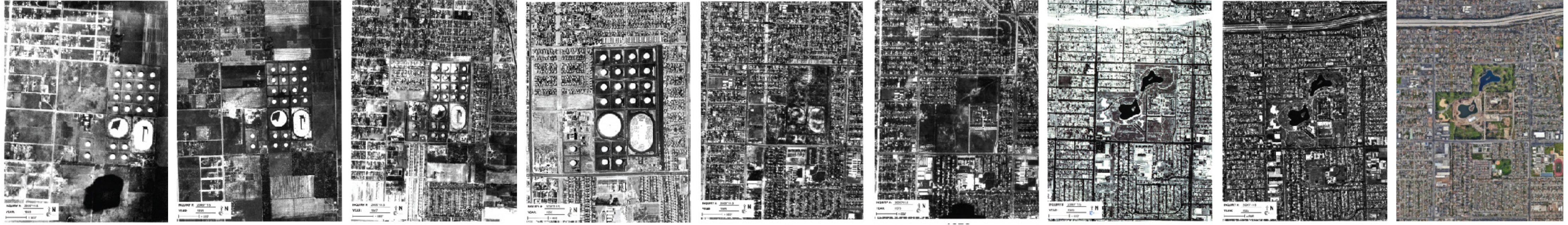
Monuments reflect and legitimize historical narratives that draw from and are contextualized by the archival body. In Willowbrook, decades of disinvestment and "archival silences" (Kelly Lytle Hernandez) elide the histories that community members carry in their memories and stories. With this in mind, we are generating an interactive community archive to be brought into the physical fabric through augmented reality experiences activated by monuments and rest stops along the corridor.



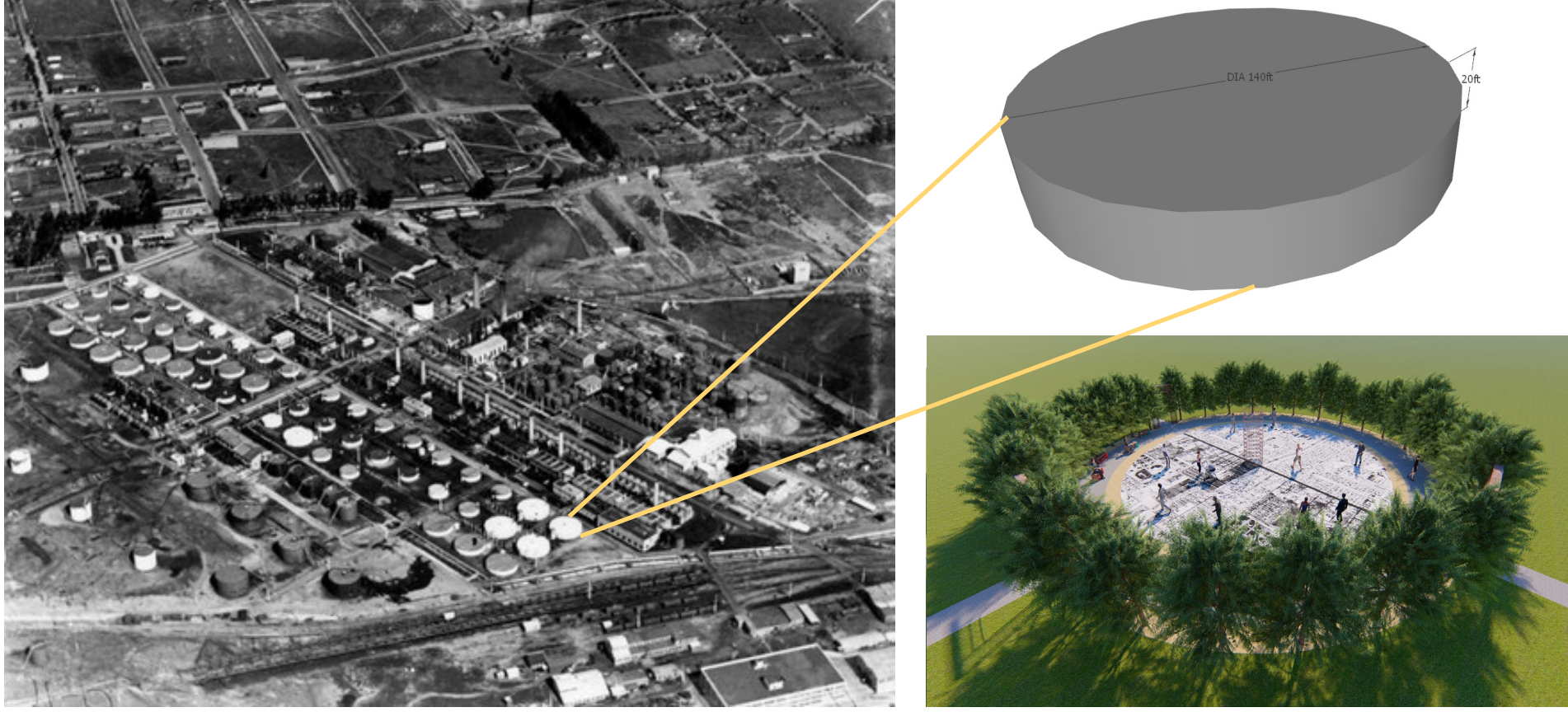
# Willowbrook COMMUNITY MONUMENTS



## Bearing Witness (Earvin 'Magic' Johnson Park):

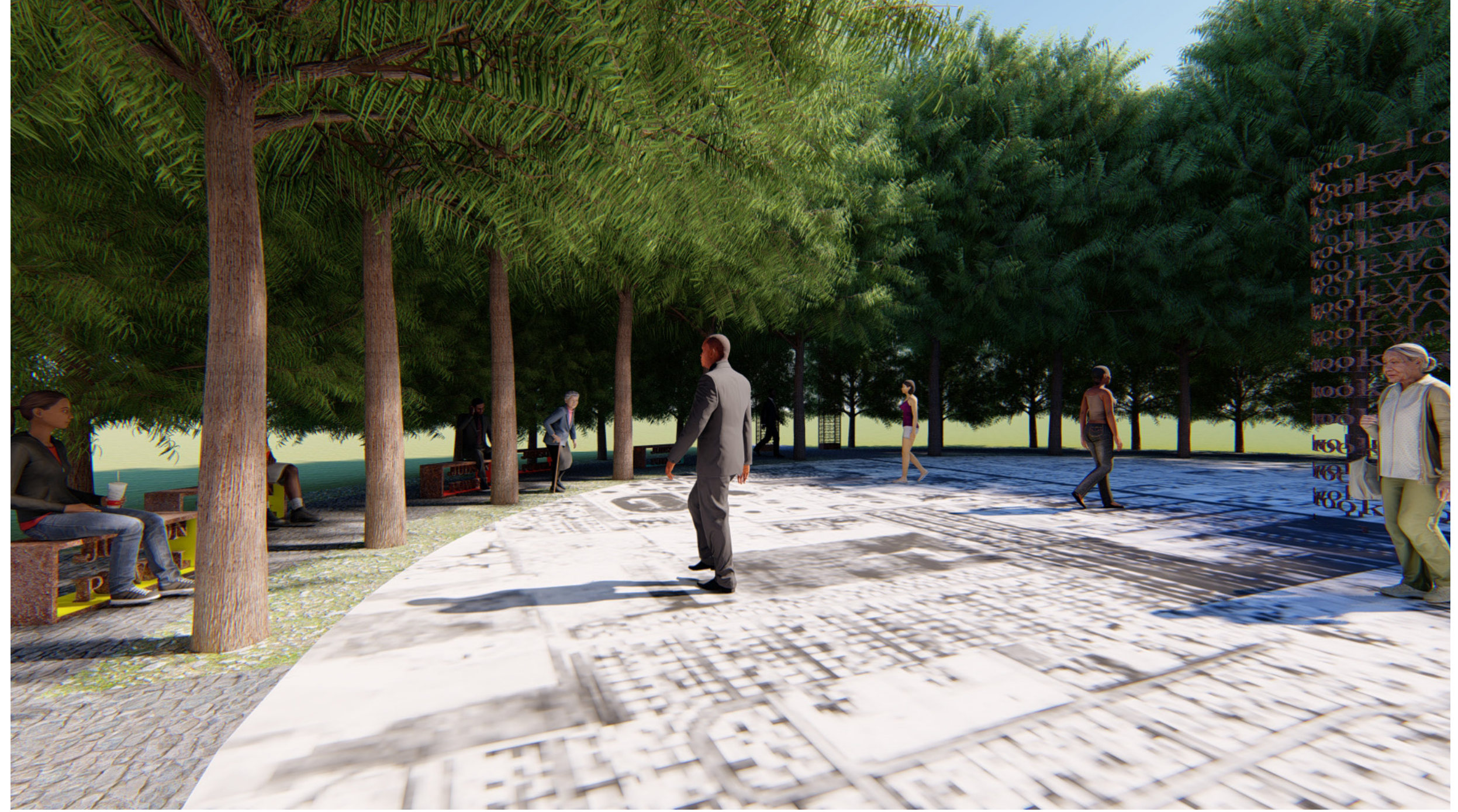


## Petroleum tanks to Ujima Village to EMJP



In 1923, the General Petroleum Company purchased the site and ExxonMobil Oil Corporation operated it as petroleum storage ("tank farm") until 1963 when it was dismantled and the tanks removed. In 1972 the Ujima Village Apartment Complex opened on the site without a proper environmental review. When residents started getting sick, the county closed the site (in 2008), giving residents 90 days to evacuate.

The 'healing garden' takes its geometry from the former tanks and transforms that harm into healing through the use of red willows (*Salix Laevigata*), a plant native to the area that is often used to remediate petroleum in the soil. The tree is also emblematic of the place - WILLOWBROOK.

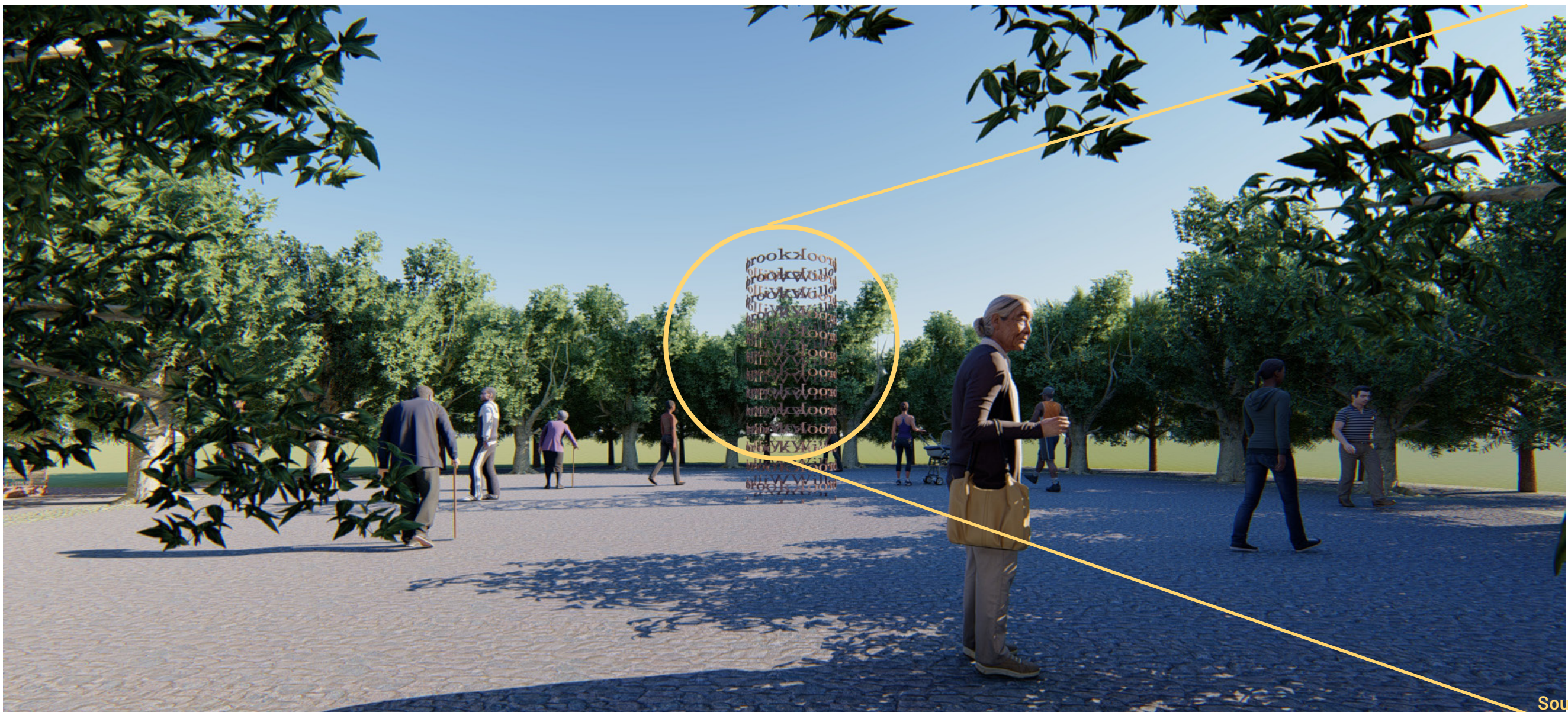


## The Story of the Shadow



The intention of this monument is to recognize challenges the community of Willowbrook has overcome. It is a site of healing, of stories of trials and triumphs. These stories are told in shadows - that move and shift and bring an element of the sacred into the context of the profane.

## The Community Archive

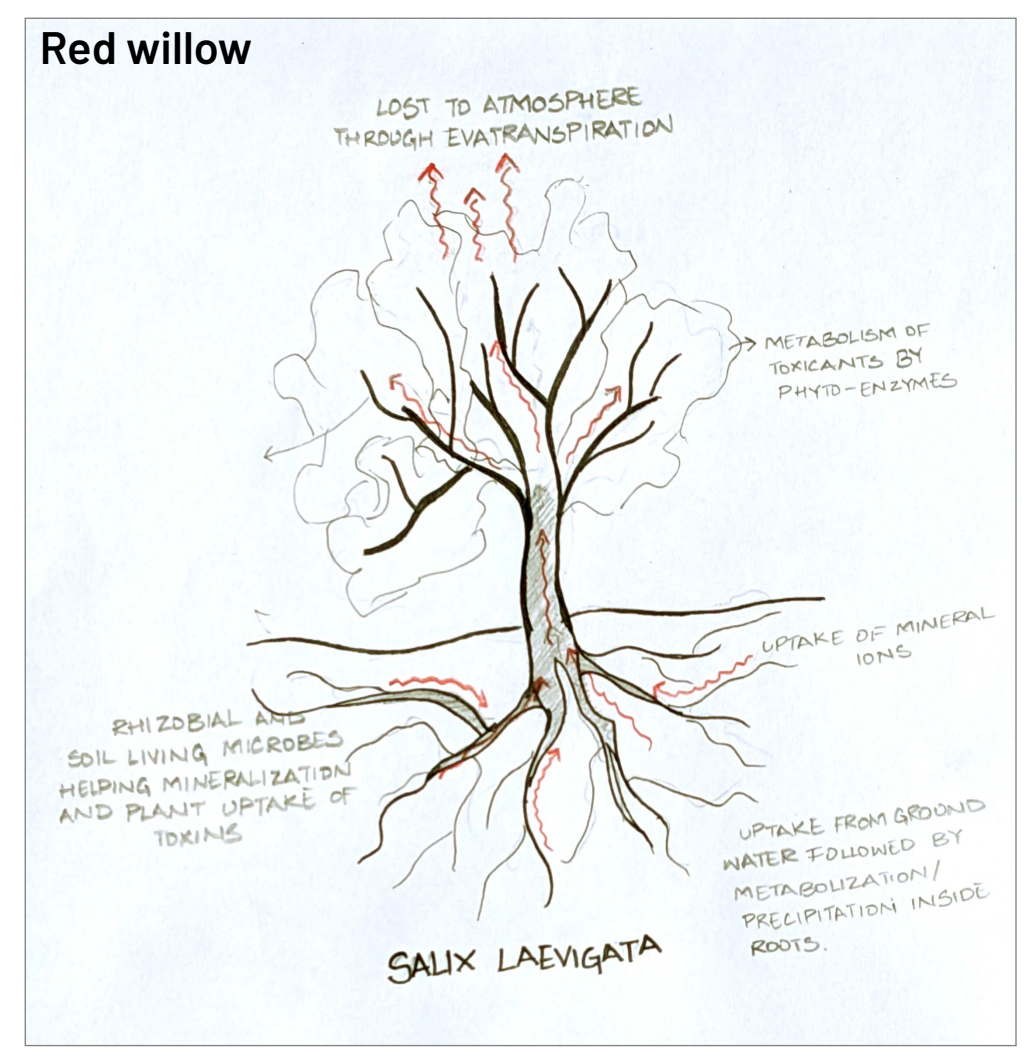


"Archival silences" are no longer muted in the healing garden. The "meridian" in the center of the space casts stories significant to Willowbrook's past and present. It serves as a light beacon in the evening and a sundial - tracing the passage of time- during the day.

What stories would you like the shadows to tell?

Would you like these monuments to double as community gathering space?  
What could you imagine happening there?

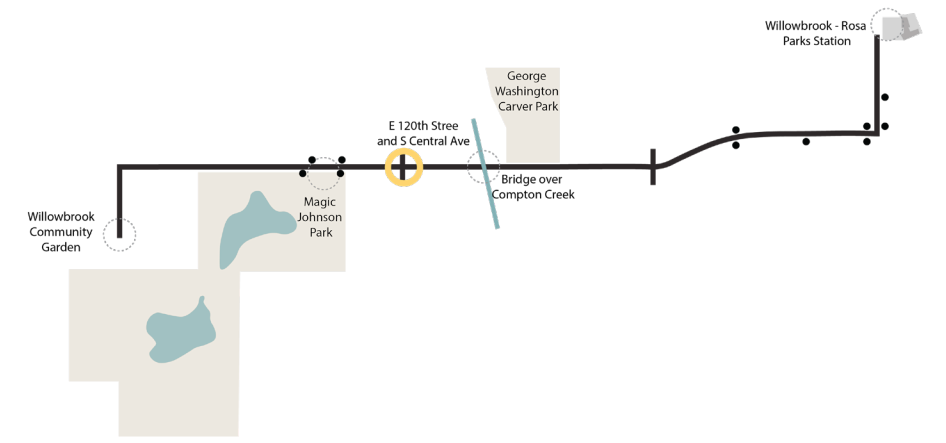
## The Healing Trees



Plants and trees belonging to the Salix genus are widely used in phytoremediation (the use of plants to decontaminate soil). The willow is especially known to mitigate petroleum ever-present in the soils of the site. While this small grove of willows will not necessarily clean the site, the intention is to use a native, sculptural shade-giving plant that is both emblematic of Willowbrook and of healing.



# Willowbrook COMMUNITY MONUMENTS



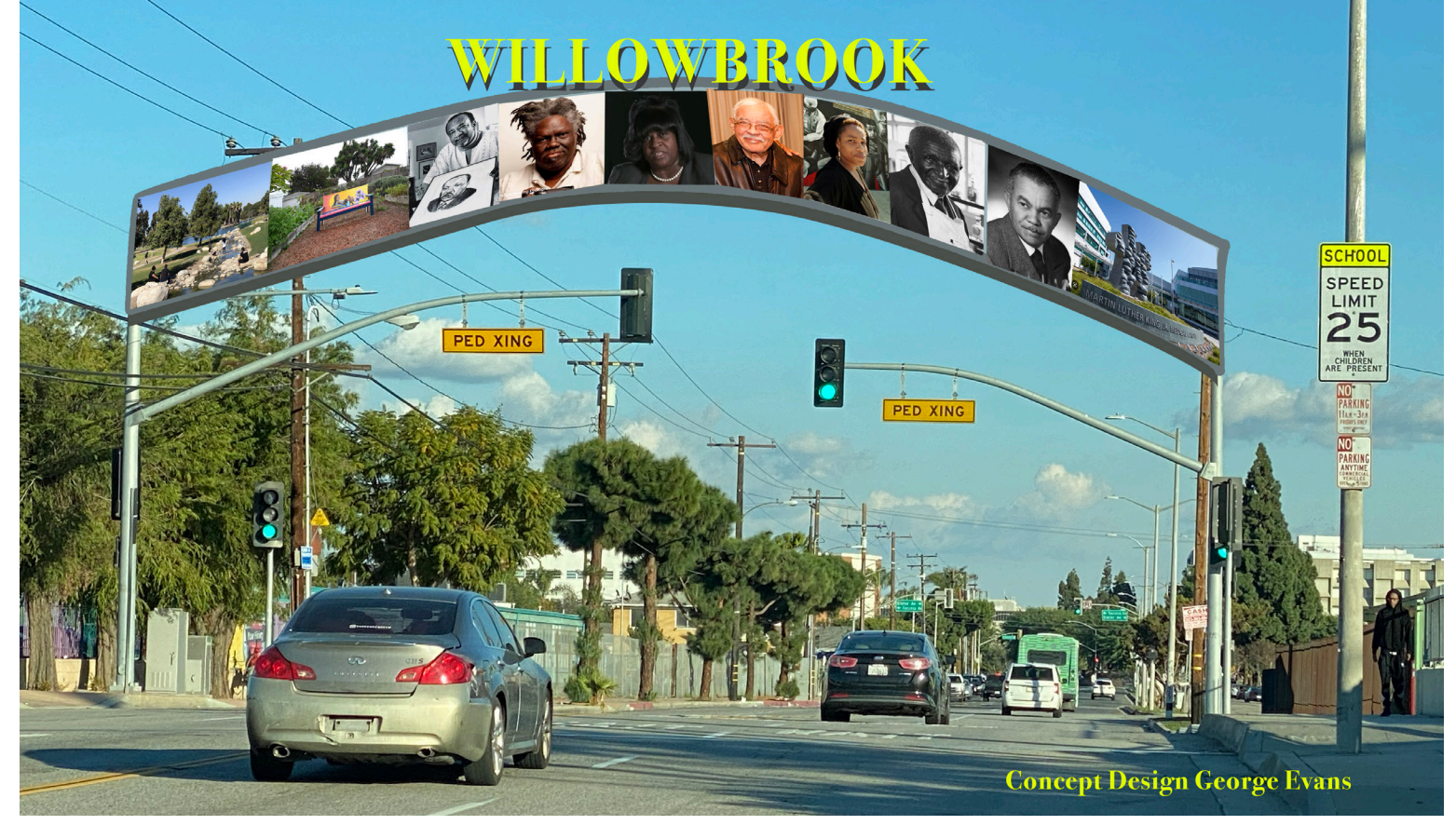
## Bridging and Building (Central+ 120th Street):



Sept. 11 Memorial, Arizona



sign by Delaino Barris



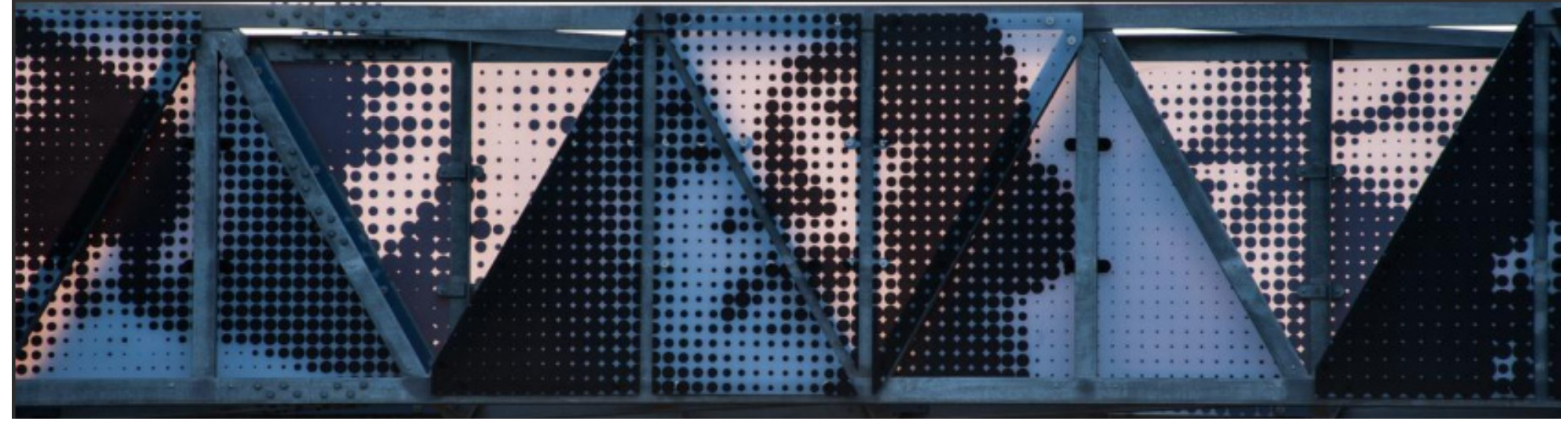
Concept Design George Evans



To the disappeared migrant: Space for memory, Ecuador



Wireless Hill Memorial, Australia

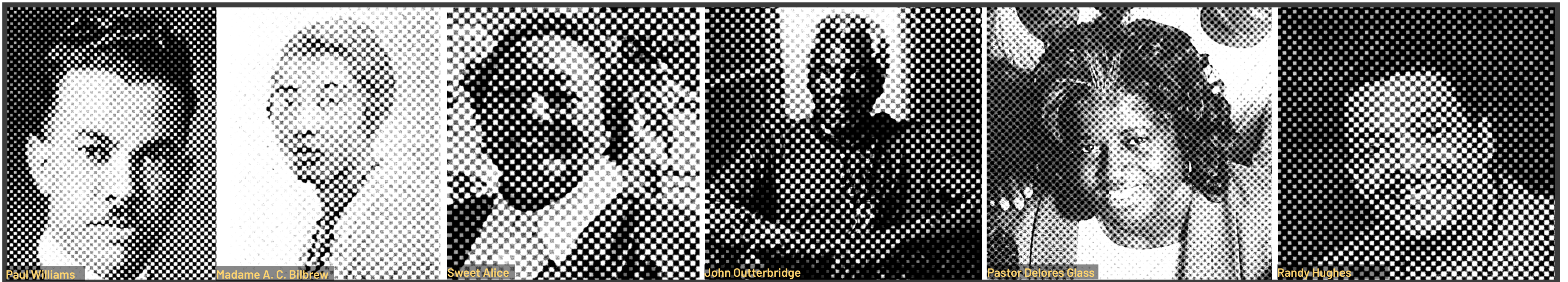


120th and Central is a critical intersection in Willowbrook - a gang line and dividing line marking east and west - the monument at this intersection will focus on the people - past, present and the outlines of those to come - that bridge and build the community into the culturally rich place it is and will become.



7th Street Dancing Lights+ Gateway by Walter Hood

## Some faces of Willowbrook



This is an opportunity to highlight and remember some of the prominent people that have been significant to shaping the success and joy of Willowbrook. Forthcoming generations of Willowbrook residents will have the chance to know the faces behind the names of Willowbrook's landmarks, and the appreciate the success stories that have emerged from the community. The silhouettes (see above) of those to come have the chance to represent the people that will continue to shape the beauty and joy of the place moving forward...

## Who represents Willowbrook most to you? Why?

Do you think a monument like this would be uplifting for this critical intersection through Willowbrook? How else would you like to see the theme of bridging and building represented?

How do you think monuments start to stitch divides and celebrate all of Willowbrook?

